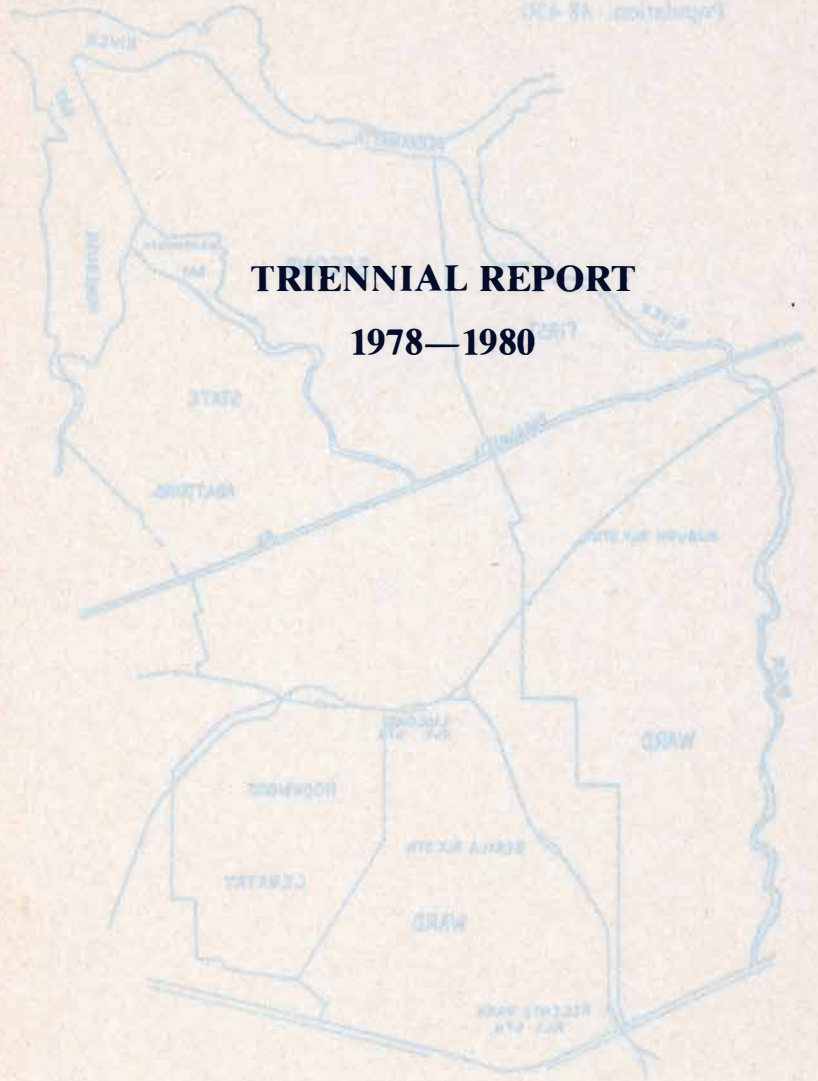


MUNICIPALITY OF AUBURN

TRIENNIAL REPORT

1978-1980

MUNICIPALITY OF ALBURN
Reduction ratio: 20:400:1
Area of Municipality: 3132 ha
Length of Boundary: 197.92 km
Population: 48.430



TRIENNIAL REPORT 1978—1980

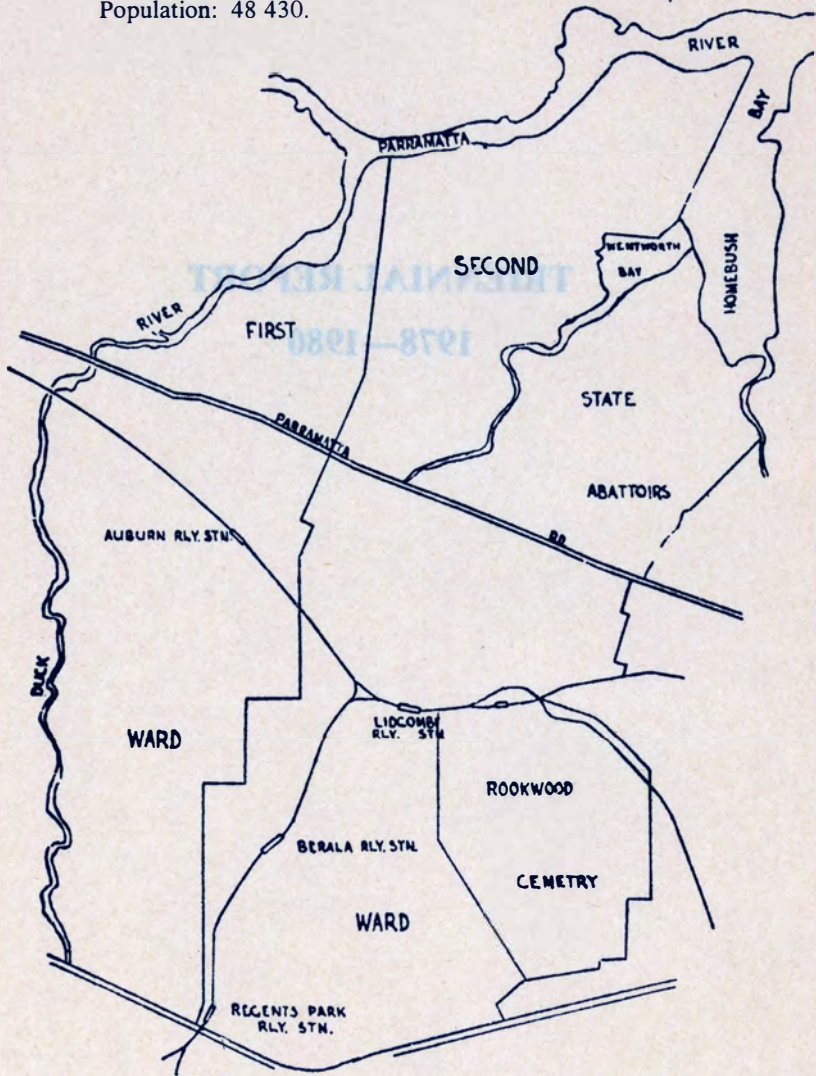
MUNICIPALITY OF AUBURN

Reduction ratio: 55 440 : 1.

Area of Municipality: 3152 ha.

Length of Roadways: 197.95 km.

Population: 48 430.



INTRODUCTION

The approaching conclusion of yet another three year term of office of your Council is a time which gives the opportunity to reflect upon things achieved and at the same time, assess the effectiveness of administrative and technical functions which are involved in the every day management of the Municipality.

It has always been foremost in the minds of your elected Aldermen that efficiency, with consequent economies should be actively pursued and expanded to enable the level of rate revenue to be minimised. In this regard it is interesting to note that a report issued by the New South Wales Boundaries Commission early in the term stated that most common rates in the Auburn Municipality were the eighth lowest among forty-two local government instrumentalities within the County of Cumberland.

Also of interest is the fact that despite the introduction of legislation by the State Government to limit the annual rate increases of Councils, Auburn has exercised considerable restraint when compared with other areas by not taking advantage of the right to levy rates up to the maximum level permissible e.g.,

Year	Maximum Approved Increase	Actual Increase
1978	9.5%	5.8%
1979	8.0%	8.0%
1980	10.0%	3.57%

Added weight is given to the above figures when considering that any shortfall in the actual rate levied in any one year may be added to the limit in succeeding years, thus demonstrating that Council has refrained from imposing a further increased levy of 10.13% over the three year period.

Council's policy has always been an endeavour to control its rate levies within acceptable limits, having in mind that it must keep the Municipality progressing in the matter of continuous works programmes, maintain its social services viz. Senior Citizens Homes (71 to date), Meals on Wheels, Home Nursing Service, etc., and to promote and upgrade still further, its policies of developing areas for both passive and active recreation.

Of the estimated income which is \$8,147,000 for 1980, Council has allocated \$2,502,310 for roads and ancillary expenditure; \$528,000 for public parks, gardens and reserves; \$436,870 for Library services and \$120,000 for Swimming Centre operations. Some essential items of expenditure, such as the purchase of heavy road construction equipment, contribution to work on two secondary main roads and assistance to sporting associations will be catered for from loan borrowings.

A principle has been adopted of a three year set works programme for each elected triennial period and although there are two wards, this policy has led to a vastly improved standard in road construction, kerbing and guttering and paving, so much so, that with major roads generally completed, a large volume of the annual public works vote has been allocated to full width road sealing and continuation of this policy will see in the future, greatly increased spending on general beautification programmes. In the past, the Municipality of Auburn has always been associated with industrial uses but during the last decade, it has experienced a remarkable change in land use in applicable zones; developers and business interests have capitalised on the fact that the Municipality is centrally located within the Sydney Metropolitan area and, for this reason, warehousing has now become of paramount importance in land use applications.

Being centrally located does confront Council with some problems in relation to road use by the daily volume of through traffic. Two projects which will help alleviate the situation are the completion of the Western Freeway now held up temporarily pending erection of the vehicular bridge over Duck River, a Main Roads Department project, and the construction of a new road through the Rookwood Cemetery between Arthur and East Streets which should relieve the problems of motor traffic linking up with Main Road 190, the latter work costing up to \$250,000.

During the early part of 1979, an extra-ordinary vacancy in the membership of Council was caused by the resignation of Alderman S. J. McManis and an election to fill the vacancy was held on March 17, 1979, which resulted in the election of Alderman H. J. Nagle.

Being an election year, all eligible voters are reminded of the necessity to vote to avoid the possibility of fine for failing to do so. Electors are also advised to vote early in the day as this will assist in preventing congestion at the various booths now that voting concludes at 6.00 p.m.

Preparation of rolls commences on June 16, 1980, and as the onus rests with the elector to be properly enrolled, it would be prudent to check enrolment at the Council Chambers although in certain circumstances, a vote may be obtained on election day if not already enrolled and any enquiries concerning all aspects of the election will be readily answered on application at the Council Chambers. The most significant electoral change since the issue of the previous Triennial Report has been the re-introduction of grouping of candidates names on the ballot paper which permits the various groups standing for aldermanic honours to be

separately identified and it is hoped that this form of ballot paper will simplify the process of voting to a degree which will greatly reduce the percentages of informal votes cast in previous elections.

It will be recalled that in conjunction with the 1977 elections, a poll of electors was taken to present the choice of whether or not the Municipality of Auburn should be amalgamated with any other local government area. The results of the poll clearly indicated that Auburn strongly desired to retain its identity and all residents are assured that the present Council will continue to resist to the utmost any such proposal so that the Municipality will remain autonomous.

FINANCE

As a continuation of its policy in relation to contributions to statutory bodies, Council has again made representations for the removal of the annual contribution to the Board of Fire Commissioners; not only due to the moral justification involved but also due to the inflationary ramifications of its continued imposition. As previously mentioned, Council, by way of governmental direction, is required each year not to exceed a rate levy at a fixed percentage above that of the previous year yet was faced this year with a Fire Board contribution of 24% above that of 1979.

This is one of many problems confronted by the Estimates Committee each year and I pay tribute to its members for the determined manner in which they have approached their annual task with a view to maintaining a stable financial position without sacrificing necessary works and services or progressive improvement to the amenity of the Municipality. Evidence of this stability is reflected in Council's Available Funds Account which has consistently remained in a healthy state.

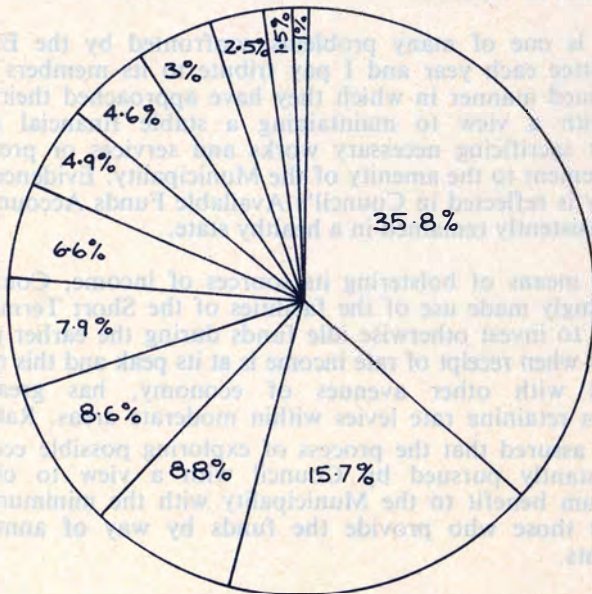
As a means of bolstering its sources of income, Council has increasingly made use of the facilities of the Short Term Money Market to invest otherwise idle funds during the earlier parts of the year when receipt of rate income is at its peak and this measure, coupled with other avenues of economy, has greatly assisted in retaining rate levies within moderate areas. Ratepayers can be assured that the process of exploring possible economies is constantly pursued by Council with a view to obtaining maximum benefit to the Municipality with the minimum direct cost to those who provide the funds by way of annual rate payments.

STATEMENT OF INCOME AND EXPENDITURE FOR THREE YEARS ENDING DECEMBER, 1980

Aggregate expenditure over the period was \$21,065,674 and a more detailed dissection of this total follows in both diagram and tabulated form:-

% EXPENDITURE RELATED TO EACH DOLLAR

1. General Administrative Services.
2. Public Services.
3. Health Services (Includes Building Control).
4. Welfare Services.
5. Garbage Services.
6. Housing and Community Amenities.
7. Library Services.
8. Recreation and Cultural Amenities.
9. Roads and Ancillary Facilities.
10. Economic Services.
11. Unclassified Services.
12. Capital.

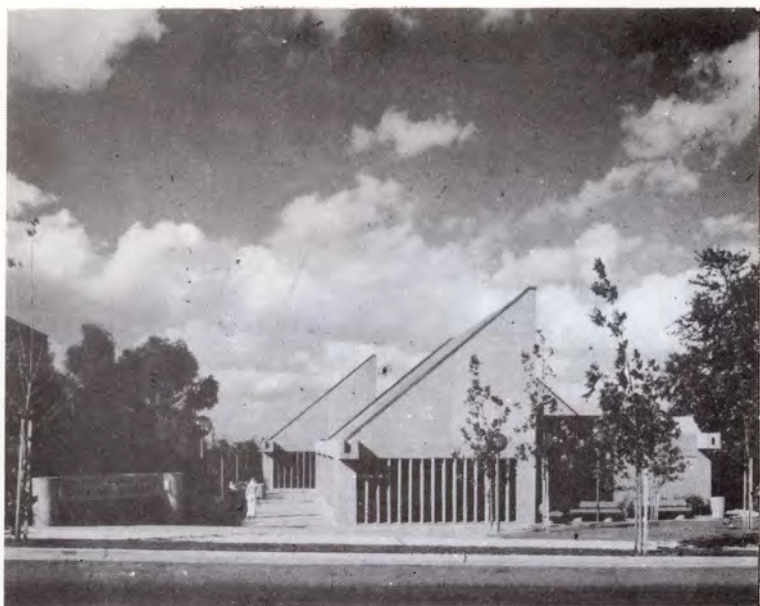


EXPENDITURE

	1977	1978	1980	TOTAL
1. General Administrative Services	1,014,661	1,079,132	1,225,459	3,319,252
2. Public Services	157,928	168,141	197,581	523,650
3. Health Services (Inc. Building Control)	179,601	207,177	239,460	626,238
4. Welfare Services	103,825	109,511	107,494	320,830
5. Garbage Services	556,935	592,858	656,550	1,806,343
6. Housing and Community Amenities	366,827	435,148	587,234	1,389,209
7. Library Services	278,218	296,493	387,370	962,081
8. Recreation and Cultural Amenities	487,219	553,691	632,000	1,672,910
9. Roads and Ancillary Facilities	2,179,684	2,231,767	3,130,949	7,542,400
10. Economic Services	50	55	60	165
11. Unclassified Services	302,008	333,905	392,038	1,027,951
12. Capital	558,756	725,079	590,810	1,874,645
	<u>\$6,185,712</u>	<u>6,732,957</u>	<u>8,147,005</u>	<u>21,065,674</u>

INCOME

	1978	1979	1980	TOTAL
1. Rates	4,905,882	5,358,497	5,779,210	16,043,589
2. Government Grants and Subsidies	527,500	583,350	1,482,700	2,593,550
3. General Administrative Services	42,300	37,200	47,400	126,900
4. Public Services	4,500	4,900	5,000	14,400
5. Health Services	8,500	9,250	10,500	28,250
6. Welfare Services	42,620	46,800	57,245	146,665
7. Garbage Services	139,000	142,000	147,000	428,000
8. Housing and Community Services	94,400	98,100	93,800	286,300
9. Library Services	--	--	1,000	1,000
10. Recreation and Cultural Amenities	111,800	121,900	154,900	388,600
11. Roads and Ancillary Facilities	174,210	179,160	181,250	534,620
12. Economic Services	30,000	32,000	35,000	97,000
13. Unclassified Services	105,000	119,800	152,000	376,800
	<u>\$6,185,712</u>	<u>6,732,957</u>	<u>8,147,005</u>	<u>21,065,674</u>



New Central Library - Queen Street, Auburn.



Completed roadworks - Joseph Street.



Barbecue and picnic area — Botanic Gardens.

PARTICULARS OF GENERAL RATE LEVY

<u>YEAR</u>	<u>RATE IN \$</u>	<u>VALUE USED FOR RATING</u>	<u>YIELD</u>
1978	1.217	399,111,870	4,905,882
1979	1.316	399,270,845	5,358,497
1980	1.363	411,698,565	5,779,210

BOTANIC GARDENS

On September 11, 1977, the Botanic Gardens were officially opened by His Excellency the Governor of New South Wales, Sir Roden Cutler, V.C., K.C.M.G., K.C.V.O., C.B.E., K.St.J., accompanied by Lady Cutler before a large attendance of distinguished guests and members of the public.

Since the opening, the area has been the subject of many television commentaries, newspaper and magazine articles and complimentary remarks from visitors of all walks of life and all parts of Australia. After accepting an invitation to visit the Gardens, the Premier of New South Wales, Mr. Neville Wran paid tribute to those associated with their design and development. It is now a common sight for lines of chartered or tourist coaches bringing their passengers to the area for inspection and these also include organised garden club tours.

Another feature which has appeared to become most popular is the celebration of marriages at various points in the gardens and/or the taking of wedding photographs. Also, Council has provided in the meantime a very attractive barbeque-picnic-children's play area at the western end of Chiswick Road for visitors to enjoy further the attractions of the gardens and this amenity has also proved to be very well patronised particularly in view of the adequacy of electric barbecue units which have been installed.

Should visitors desire to partake of light refreshments only at the conclusion of their inspection, these are readily available in comfortable and attractive surroundings at the adjoining kiosk so I can only encourage all ratepayers and residents alike to take advantage of this wonderful amenity (admission free) and similarly, suggest that they "spread the word" to friends and relatives, near or far.

TOWN PLANNING

The Town Planning Department of Auburn Municipal Council was re-organised in April, 1978 following the resignation of Council's Engineer/Town Planner, Mr. Eric Black. This established a separate Department for planning matters replacing the former dual Engineering/Town Planning Department.

During the triennial period, Council's Town Planning Department has issued 696 Development Consents for new developments and change of use of existing buildings for which \$107,787 in development application fees has been paid.

Eight Interim Development Orders were proclaimed in the period and involved a change of Special Uses (Church) to Residential 2(c) in Mark Street, Lidcombe; an alteration of the local industrial zone at 51 Joseph Street to allow a school to be erected; a suspension of four residential 2(c) lots in Norval Street to permit professional consulting rooms; a change in the 4(b) zoning of 2-10 Victoria Street to include auctions; an additional use in the 2(a) zoning of 5 Weymouth Avenue to include golf club and a change of the General Industrial 4(a) zoning of 72-76 Silverwater Road to include a Bank Chamber.

These Orders bring the number of Interim Development Orders proclaimed since the prescription of the Auburn Planning Scheme on September 18, 1970, to thirty-two.

Council, in August, 1979, resolved to prepare a varying scheme for the Municipality. This scheme will be prepared under the new Environmental Planning Legislation which was introduced to State Parliament during late 1979 and became law on November 22, 1979.

The Environmental Planning and Assessment Bill 1979 will have the greatest impact on Town Planning within the Municipality. This Bill, one of five passed by the Legislation, will replace the parts of the Local Government Act, which deal with planning. The entire planning process will be revised and updated and environmental, social and economic factors will be incorporated in the decision making process in line with modern concepts.

The Legislation provides for regional and local environmental plans, with regional planning to be undertaken by the newly established Department of Environment and local planning the responsibility of local Councils.

More public participation in the planning process is possible as planning proposals are to be made public before finalisation.

Opportunities will exist for people to make submissions on environmental studies which precede plans, draft plans and development which requires environmental impact assessment and further opportunity exists for appeal against decisions of such development.

Public participation will be invited and welcomed by this Council in line with the provisions of the new Legislation as plans are exhibited.

GRANNY FLATS

During the mid part of 1979 the State Government announced its "Granny Flat" or "Dual Occupancy" Policy. The basic intention behind the policy is to allow the conversion of single residential dwellings to two self-contained dwellings which would thereby allow relatives to live with their families or it could provide home owners with rental income.

Before the policy can be implemented it is necessary to alter the principal Auburn Planning Scheme Ordinance so as to provide that development consent may be granted by Council. In this respect Council was advised by the Planning and Environment Commission, during January, 1980, that the Auburn Planning Scheme Ordinance will be altered by the insertion of a new clause to allow conversion of dwellings in all residential zones to two separate dwellings provided that — the existing allotment on which the house is erected exceeds 400m², the ground floor area of the dwelling is not increased by more than 30%, adequate public utility services are available and one of the dwellings is intended to be used by the owner.

In keeping with its legal rights under the Local Government Act, 1919, Council took the opportunity to object to the proposed amendment to the Planning Scheme and has lodged an objection with the Planning and Environment Commission, however, not on the basis of the Policy generally as Council recognises that there may be a need for this type of accommodation, but on the basis of the way in which the new amendment was drafted and the many possible interpretations that could be placed on it.

In lodging an objection, Council also indicated that it may not be appropriate to allow the conversion of dwellings in all residential areas and in this regard has requested the Minister for

Planning and Environment to defer the introduction of the Dual Occupancy Policy until Council is able to complete an Environmental Study of its residential areas, as part of the preparation of the proposed Varying Planning Scheme.

The objection forwarded to the Planning and Environment Commission is available for perusal by any interested person during normal office hours.

LIBRARY SERVICES

September, 1979 saw the culmination of a long awaited milestone in the history of the Library Service, when Auburn Library moved from the old School of Arts building, from whence it had operated for eighteen years, to its new, modern home. Construction of the building commenced in June, 1978 and residents and Library staff followed its progress with great interest. The new premises are spacious with separate Children's and Adult libraries, a study room, audio-visual room and a browsing area where one can sit in an easy chair in air-conditioned comfort.

The building is designed on one level with no steps so people in wheel chairs can now enjoy the amenities provided by the Central Library.

The libraries have been very busy over the past three years, expanding services to schools, nursing homes, hospitals, sight-handicapped people, and the community in general.

School visits to all three libraries continue on a regular basis and instruction is given on the use of the library if the children are old enough. Stories are read or told to younger children or a film is shown or they participate in a craft activity.

Films are borrowed from the Sydney Children's Libraries' Film Circuit of which the Auburn Library is a member. These films are often based on children's books and promote a greater interest in and use of the books.

Family film nights are a regular feature at the Central Library and these have been quite successful. There is no charge and all are welcome.

Holiday activities have proved very popular over the past three years, with children taking part in many varied forms of craft, model making, drawing and painting, junk sculpture, charades,

puppet shows etc. Children are encouraged to come into the libraries at any time to sit and read or play a game.

Books in various languages are borrowed on a regular basis from the State Library and are always popular with the ethnic groups in the Municipality.

Loans increased to over 5,000 volumes in 1979 and it is gratifying to see so much use made of these books.

Purchase of books in other languages are made by Auburn Library, but collections are small owing to the difficulty of supply.

Inter-Library loans provide an excellent service to all borrowers on any subject. If the books are not in stock in our own libraries we borrow from another library which specialises in the subject required.

Large print books prove extremely popular with people who have difficulty reading ordinary print. The range and scope of these books and the number of titles are continually increasing as is their use. A small stock of "Hear-a-book" cassettes is also available for print-handicapped borrowers and more cassettes will be added each year.

It is hoped that the service to "Shut-in" borrowers will be expended with the purchase of a small van. At present this service is most ably carried out by volunteer drivers from Auburn Community Aid Information Service, without whom there would be no service to this section of the Municipality.

Various local art and craft groups have held exhibitions in the libraries and competitions, particularly those connected with Children's Book Week have proved very popular. Local groups and societies are reminded that the libraries are willing to display posters, notices etc., concerning their activities.

The library staff are also very interested in any matter of local historical significance and actively assist the Auburn Historical Society which meets regularly in the former Library building. Residents are requested to co-operate and consult with Council before destroying old photographs, papers etc., which could prove to be an invaluable part of existing documents and the like at present held by either the Society or Council.

Libraries are information centres and any enquiry is welcome. The staff will do their best to find the answer.

Photocopying facilities are available at the Central Library. The charge is 20c per sheet and the photocopier is coin-operated.

The services of all three libraries are for the use of all ratepayers, residents and school children in the Municipality.

SOCIAL CENTRE

Following the transfer of Council's Central Library to its new premises, its former site was renovated to provide a common meeting place for local groups who previously had to meet at locations which could be described as less than appropriate for the activities they pursued. This step has had the wholehearted support of all those who now meet at the Centre and includes pensioner groups, Camera Club, Historical Society, Art Society, etc.

RELOCATION OF WILSON PARK

During December, 1979, Council considered a proposal for the relocation of Wilson Park to the riverfront site formerly occupied by Petroleum and Chemical Corporation (P.A.C.C.A.L.) on the basis of land exchange of the existing park site for development purposes.

Subject to the concurrence of the Minister for Lands, Council has agreed to the proposed exchange and its decision was influenced inter-alia, by the undermentioned factors:-

- (a) The transfer of an improved waterfront site for active and passive recreation **at no cost to Council.**
- (b) Creation of a facility which by virtue of automatic irrigation and selected plant types will have low maintenance costs.
- (c) The creation of "better" playing fields in terms of drainage and multiple use possibilities.
- (d) Provision of one extra all-weather cricket pitch.
- (e) The provision of five hectares of passive recreation area adjacent to Parramatta River and an artificial lake.
- (f) A greatly improved amenities block and an extra toilet block.
- (g) Upgrading of the Parramatta River frontage and the provision of a new boat launching ramp and landing stage.
- (h) The opportunity to rationalise the road system in the neighbourhood of the existing Wilson Park.
- (i) Assisting in the aims of the Parramatta River Conservation Co-Ordination Committee (Council is represented) which to date, has achieved remarkable success at points lower down the River in conjunction with other Councils in conserving, beautifying and regenerating same.

At present, estimated costs of the proposal reach towards the \$1 million mark and Council considers that the long range benefits involved, coupled with the desirability to provide a magnificent waterfront park in lieu of that existing, warranted the support the proposal has received to date; particularly in view of the fact that no expense will be incurred by the ratepayers in completing the project.

Another very important factor which convinced Council that the scheme should proceed, was the thought that the only other alternative for the waterfront site i.e., industrial development, would possibly result in the loss forever of this strategically placed foreshore location and I am certain that future generations will be thankful for the amenities provided as a public recreation area when considering what could have occurred.

HOUSING FOR SENIOR CITIZENS

A further step in the provision of housing units for aged persons was taken during 1977 when Council agreed to commence a project on the former site of the Lidcombe Town Hall in Church Street.

Weather delays, building problems and difficulty of the site produced many deferments of the completion date and the Centre was officially opened on November 25, 1978. This raised the total number of units now available for aged persons to 85 and the comments of those in attendance at the opening, together with those of the tenants since, surely indicate that the quality of the units and their contents leave nothing to be desired.

The cost of the project was \$394,588 and of this sum, the Department of Social Security contributed \$254,616 for which I express appreciation on behalf of Council as efforts to provide this form of housing would be severely curtailed without adequate financial assistance from that Department.

In a fitting gesture the Centre was designated "Valma Hedges Citizens Centre" as a tribute to the Auburn Senior Citizens Welfare Association and its President Mrs. Valma Hedges. It is not a generally known fact that this Association (formerly the Auxiliary to the original Association) has accepted responsibilities from the outset to provide the finance for the furnishing of units constructed by Council and the community as a whole owes some gratitude to this dedicated band of ladies who have made such a sterling effort in this direction over the years.

Unfortunately, Council has no immediate plans for construction of further units within the Municipality due primarily to the financial aspect and lack of suitable sites although interested parties are advised for information purposes that the Housing Commission is currently constructing a large complex of units in Mary Street, Auburn, which should help to alleviate the shortage of suitable housing of this nature.

ROOKWOOD ROAD RECONSTRUCTION

Reconstruction on this road has continued throughout the triennial period, and work on the full width reconstruction and sealing has been completed between the Municipal boundary, immediately south of Lewis Street and Georges Avenue, at a total cost of approximately \$1,900,000.

It is intended that subject to funds being available from the Department of Main Roads that reconstruction will continue during the next triennial period and the work should almost be completed during this period.

WESTERN FREEWAY

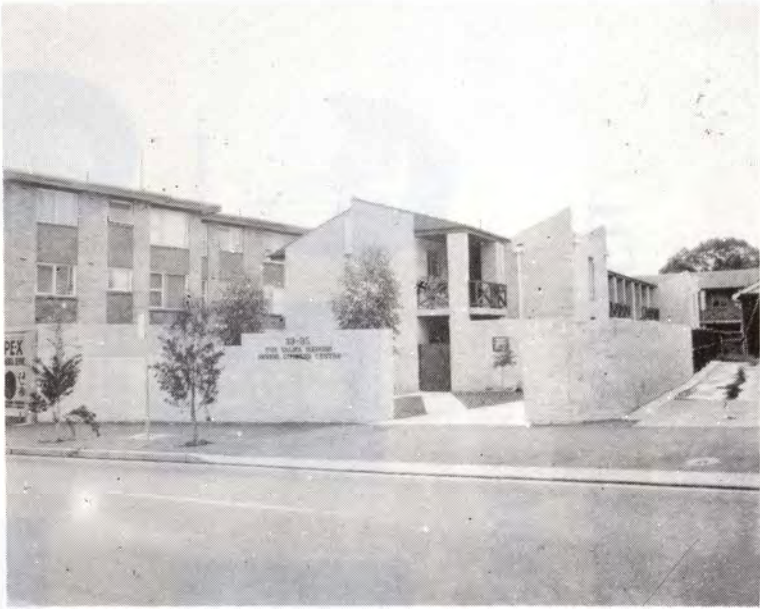
Construction of the Western Freeway is continuing in various sections between Concord Road and Mays Hill. Enquiries from the Department of Main Roads have revealed that the anticipated date of completion of the bridge over Duck River is August, 1981, and the bridge over the Expressway at Stubbs Street is July, 1981. The Western Freeway is scheduled for completion in early 1982 between Concord Road and Silverwater Road and from Church Street, Parramatta to Mays Hill.

When work has been completed in both sections, the road will be open to traffic. The section from Silverwater Road to Berry Street, Granville, will be completed early in 1983.

The above schedules are dependent of course, on continued Government funding.

SUBDIVISIONS

During the current triennial period numerous small subdivisions, residential and industrial, were approved by Council. The largest residential subdivision to occur within the Municipality for many years was approved by Council during October, 1978. This subdivision involved the extension of Lewis Street, Regents Park, in a westerly direction and resulted in the creation of an additional twenty three (23) allotments.



Valma Hedges Senior Citizens' Centre - Church Street, Lidcombe.



Proposed site for waterfront parkland - Silverwater.

AUBURN MUNICIPAL COUNCIL

1977 - 1980



Ald. C. G. NOBLE, J.P.



Town Clerk:
Mr. G. J. LANE, J.P.
A.T.C.S. A.I.M.A.



Deputy Mayor:
Ald. P. A. HIELOP, J.P.



Deputy Town Clerk:
Mr. C. GOLDSWORTHY, J.P.
A.T.C.S. A.I.M.A.



Ald. S. L. HEDGES, J.P.



Ald. L. I. HERD, J.P.



Ald. K. BOGUSLAWSKI

AUBURN MUNICIPAL COUNCIL

1977 - 1980



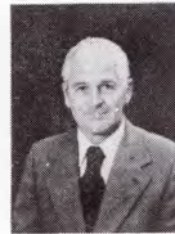
Ald. C. G. NOBLE, J.P.



Town Clerk:
Mr. G. J. LANE, J.P.
A.T.C.S. A.I.M.A.



Deputy Mayor:
Ald. P. A. HISSLOP, J.P.



Deputy Town Clerk:
Mr. C. GOLDSWORTHY, J.P.
A.T.C.S. A.I.M.A.



Ald. S. L. HEDGES, J.P.



Ald. K. BOGUSLAWSKI



His Worship The Mayor:
Ald. T. H. KEEGAN, J.P.



Ald. A. I. HERD, J.P.



Ald. E. J. CHALLENGER, J.P.



Engineer:
Mr. P. M. DONNELLAN
A.S.T.C., L.O.S., M.I.E. (Aust.)



Health Surveyor:
Mr. A. P. HAYES, J.P.
A.E., F.A.I.H.S., M.B.S.I.



Ald. K. B. HUTEAU, J.P.



Ald. G. J. GRAYSTON, J.P.



Ald. H. J. NAGLER, J.P.
D.A.M.



Town Planner (Acting):
Mr. N. W. HERFURTH



Ald. H. G. THOMAS



Ald. K. F. JONES, J.P.

Composite photograph of Aldermen and Senior Servants of Council.



Ald. E. J. CHALLENGER, J.P.



Engineer:
Mr. P. M. DONNELLAN
A.S.T.C. L.O.E. M.I.E. (Am.)



His Worship The Mayor:
Ald. T. H. KEEGAN, J.P.



Health Surveyor:
Mr. A. P. HAVISS, J.P.
A.E.F.A.L.M.S. M.B.S.I.



Ald. K. B. HUTEAU, J.P.



Ald. G. J. GRAYSTON, J.P.



Ald. H. J. NAGLER, J.P.
O.A.M.



Town Planner (Acting):
Mr. N. W. HERPURTI



Ald. H. G. THOMAS



Ald. K. F. JONES, J.P.

Composite photograph of Aldermen and Senior Servants of Council.



Carparking Station - Bridge Street, Lidcombe.



New residential subdivision - Lewis Street, Regents Park.

Council proposes, with the consent of the Public Transport Commission, to construct a pedestrian subway under the railway line which will connect Lewis Street with Dawes Avenue/Nottingham Road.

LIDCOMBE CARPARKING STATION

Council during 1979 accepted a tender from Commercial Industrial Contractors Pty. Ltd., amounting to \$819,782,00 for the construction of a multi-storey public car parking station at the corner of Tooheys Lane and Bridge Street, Lidcombe. The car parking station comprises five upper and lower levels having a capacity for 226 cars. It is anticipated that the station will be operational towards the end of this year and prove to be of great benefit to the Lidcombe Shopping Centre.

STREET NAME PLATES

Council in May 1979, decided to replace the older type street signs with new aluminium name plates which incorporate Council's name and crest. At the present time council has ordered and/or received approximately 350 street name plates and the replacement programme will continue over the next few years.

AUBURN SWIMMING CENTRE

Following the damage caused to the pool enclosure by the hailstorm in November, 1976, and the necessary demolition of the structure Council during 1978 reconstructed, the pool enclosure and the heated pool is operating satisfactorily. As part of its policy of continually exploring avenues of economy, Council during 1980 decided to convert the existing boilers which used industrial diesel fuel to natural gas use and it is considered that the change-over costs will be recouped in approximately 18 months and that a great saving will be achieved in the operating costs of the heated pool. Further to this Council has embarked upon a thorough examination of solar heating with the intention of further reducing the operating costs.

EXTENSION OF WYATT PARK

The 6.913 hectares of land, formerly owned by G.E.C., in Percy Street was placed under the control of Auburn council for use as a park and recreational area on December 12, 1975. On December 16, 1975, a lease was entered into between the G.E.C., and Auburn Council in respect to the Percy Street land and gave the G.E.C. continuity of use of the land up to April 14, 1977.

Since this time the buildings have been demolished with the exception of the Caretaker's cottage and the bond store and the land has been cleared.

Council has constructed an athletic field, which has also been floodlit for training purposes at night and improved the old Work's Depot building with the installation of a mens' and ladies' toilet, changing and showering facilities, a gymnasium and a canteen. The athletic field and amenities building will under license be managed by the Western Suburbs Amateur Athletic Club.

The Caretaker's cottage has been converted into a mens' and ladies' toilet, canteen and headquarters for the Parramatta-Auburn Netball Association.

Council has also constructed eleven all-weather netball courts, which have been floodlit for competition and training at night, and these and the cottage have been leased to the Association. The bond store has been leased to the Parramatta Basketball Association and has been converted into three basketball courts. The amenities building has been improved with the installation of mens' and ladies' toilets, changing and showering facilities, canteen and meeting room.

An area of the land has been leased to the New South Wales Netball Association and construction has commenced on the headquarters building, with multi-purpose hall, change rooms, offices, stores, meeting rooms, kitchen, child and craft areas and four floodlit courts for netball. The remaining land has been set aside for intensive landscaping and other passive recreational uses.

UP—GRADING OF AMENITIES IN VARIOUS PARKS

- Mona Park** —Renovation of ladies' toilets.
- Silverwater Park** — Construction of mens' and ladies' toilets.
- Wilson Park** — Construction of a kiosk and Caretaker's room.
- Wyatt Park** — Construction of a kiosk.
- Phillips Park** — Construction of a storeroom and Caretaker's room.
- Lidcombe Oval** — Construction of mens' and ladies' toilets, showers and changing facilities.
- Coleman Park** — Construction of a mens' and ladies' toilet block and changing facilities.
- Webbs Avenue Playing Fields** —Construction of mens' and ladies' toilets and changing facilities.

UP—GRADING OF UNDERGROUND WATER SERVICE IN VARIOUS PARKS

- Mona Park** — Extension of the water service to Mona Park 2 and 3.
- Coleman Park** — Extension of the water service to Coleman Park 2 and 3.
- Phillips Park** — Extension of the water service to the reconstructed soccer and rugby fields.

GENERAL UP—GRADING IN VARIOUS PARKS

- Deakin Park** — Construction of a pathway, installation of a water service and playground equipment, and general landscaping improvements.
- Phillips Park** — Covering of a section of the storm-water channel traversing the park and the reconstruction of the soccer and rugby fields. Improvements to the soccer field and the reconstructed rugby field.
- Mona Park** — Improvements to the floodlighting of Mona Park 1.
Construction of a turf cricket wicket on Mona Park 3.
- Webbs Avenue Playing fields** — Construction of two soccer fields, one concrete wicket and two softball fields.

WASTE DISPOSAL

Auburn Municipal Council has only one disposal area, which is located at Jamieson Street, Silverwater, and is used solely for the disposal of putrescible matter and domestic type clean-up material, and residents of the Municipality have access to this tip seven days a week between certain hours to dump such material, provided the rubbish/waste matter is carried in cars, station wagons, small trailers, panel vans and utilities, **NOT TRUCKS.**

DEPOT HOURS

Mondays to Fridays 8.00 a.m. to 2.00 p.m.
Saturdays 8.00 a.m. to 1.00 p.m.
Sundays 10.00 a.m. to 3.00 p.m.

There are three privately owned tips within this Municipality providing convenient and approved areas for the disposal of industrial and trade waste.

The following table details the amount of garbage received at Council's Jamieson Street tip for the immediate past triennial period and the fees paid to the Authority.

Year	Total Qty. of Waste	Drummoyne Council	Auburn Council	Amount paid by M.W.D. Authority	Amount paid by Drumm. Council
1978	34121.9384	11674.8356	22447.1028	\$19,108.28	\$6,537.96
1979	40975.6798	11954.9600	23020.6568	\$19,586.44	\$6,694.78
1980 (Jan. to Feb. & March)	9004.8677	3178.5334	5746.5212	\$ 5,042.73	\$1,664.97

In April, 1980, Drummoyne Council discontinued disposal of material in the Jamieson Street area.

It is anticipated that by the end of 1980, Council will be faced with the problem of disposing its household garbage at one of the private depots in the Municipality or at a recognised depot outside the Municipality and naturally this action will involve Council in additional costs associated with transport and disposal fees. Every effort is being made to preserve the life of the depot to permit residents to dispose of excess household refuse, garden clippings and the like associated with their own premises.

INFECTIOUS DISEASES

The following are figures for the triennial period of cases of infectious diseases notified to Council —

1978	1979	1980
1 Serum Hepatitis	1 Infectious Hepatitis	1 Malaria
2 Hepatitis	1 Hepatitis "B"	1 Salmonella
1 Shigella Dysentery		
1 Acute Viral Hepatitis		

The number of infectious diseases notified to Council continued to show a decline in comparison to the previous triennial period, which reflects the continuing efforts of all associated with prevention of disease, including the Council's immunisation programmes.

IMMUNISATION CLINICS

	Sabin	T/A	C.D.T.	Measles
1978	2,800	2,439	970	146
1979	1,912	2,021	637	127
1980 (Up to March 31st)	443	292	232	23

To keep your child healthy, immunisation is most important. It is a simple, effective, and readily obtainable method of protecting your child from catching the dangerous diseases of diphtheria, tetanus, whooping cough, poliomyelitis and measles. The health Commission of New South Wales recommends the following programme of immunisation for children:

At age of 2 months — First injection of triple antigen.
First dose of sabin oral vaccine.

At age of 4 months — Second injection of triple antigen.
Second dose of sabin oral vaccine.

At age of 6 months — Third injection of triple antigen.
Third dose of sabin oral vaccine.

At age of 12 months — One injection of measles vaccine.

At age of 18 months — Booster injection of combined diphtheria and tetanus toxoid (C.D.T.)

At pre-school or school entry — Booster injection of C.D.T.
Booster dose of sabin oral vaccine.

If for any reason the immunisation injections are interrupted they should be recommenced at the point at which the continuity of the programme was broken. There is no need to start again with a full course.

HOW IMMUNISATION IS CARRIED OUT

Sabin oral vaccine is given by mouth — a few drops of pleasant flavoured syrup on a spoon. The combined vaccine (triple antigen) is given by injection — a quick prick from the needle which is over in seconds. Measles vaccine is also given by injection.

WHERE TO GO FOR IMMUNISATION

Your doctor.

Your local Council.

Council holds immunisation clinics one day each month in the Auburn Town Hall, and on the days scheduled, the times for clinics are 10.00 a.m. to 12.00 noon, 2.00 p.m. to 3.30 p.m. and 6.00 p.m. to 8.00 p.m. This service is free of charge.

MOBILE BLOOD BANK CLINICS

The importance of blood and blood transfusions hardly needs any emphasis from Council, but it is surprising the number of occasions that special appeals are necessary to maintain depleted stocks of blood for emergencies.

The demand for blood increases considerably every year. In order that no request for blood is denied, many more donors are required and Council urges that this personal life-giving charitable act receives very earnest consideration.

During the triennial period, Council arranged for the Mobile Blood Transfusion Service to visit the Town Hall on nine occasions:

1978 — Four visits

1979 — Four visits

1980 — One visit (Up to April 1, 1980)

Council congratulates and sincerely thanks all donors who attended the clinics and trusts they will continue to do so.

The success of the mobile clinic is in no small measure due to the invaluable assistance given by the members of the St. John's Ambulance Brigade, Auburn Division, who diligently attend every clinic working tirelessly assisting nurses and donors with refreshments.

BLOOD BANK CLINICS

Year	Attendances
1978	815
1979	909
1980 (Up to February 23, 1980)	211
	<hr/>
	1,935

MOBILE NURSING SERVICE

Council's Home Care and Domicillary Nursing Service, which commenced in March, 1962 and is available to residents within the Municipality, continues to be in great demand.

Geriatric care as we are all aware, may be classified into various categories and council within its limited capacity has endeavoured to assist in the retention of senior citizens and the chronically ill within the privacy and independence of their own home and the environment to which they are accustomed.

The dedicated ladies who conduct the nursing service not only provide prescribed medical attention but have also developed a friendship which assists in making the life for the chronically ill or "shut-ins" a little more pleasant than it otherwise would be.

1978

Nursing Calls.....	8,414
Weekend Calls	5
Visits — Social Calls	64
Public Holiday Calls	2
Average number of Patients.....	871

1979

Nursing Calls.....	7,500
Weekend Calls	—
Visits — Social Calls	46
Public Holiday Calls	—
Average number of Patients.....	885

1980

Nursing Calls.....	1,246
Weekend Calls	6
Visits — Social Calls	147
Public Holiday Calls	145

BABY HEALTH CENTRES

1978	Under 1 Year	1-2 Years	Over 2 Years	Total
Auburn	4,356	299	193	4,848
Lidcombe	2,219	145	40	2,404
Regents Park	1,430	121	45	1,594

Baby Health Centres Continued—

1979

Auburn	5,192	328	190	5,710
Lidcombe	2,504	181	69	2,734
Regents Park	1,897	146	50	2,093

Jan & Feb., 1980

Auburn	901	51	21	973
Lidcombe	406	37	13	456
Regents Park	328	39	8	375

The facility of interpreters at the Auburn Centre has greatly eased the language problem. The interpreter is available at the following times:

Monday — 10.00 a.m. to 12.00 noon — Turkish

Friday — 10.00 a.m. to 12.00 noon — Lebanese and Arabic

Timings:

Auburn — Telephone 649-8621

Monday and Wednesday — 9.00 a.m. to 12.00 noon

Tuesday, Thursday and Friday — 9.00 a.m. to 1.00 p.m.
& 2.00 p.m. to 5.00 p.m.

Monday — 2.00 p.m. to 4.00 p.m. Pre-school medical check-up for children over 4 years.

LIDCOMBE — Telephone 649-7941

Tuesday and Thursday — 9.00 a.m. to 1.00 p.m. & 2.00 p.m. to 5.00 p.m.

Regents Park — Telephone 644-7540

Monday — 9.00 a.m. to 1.00 p.m. & 2.00 p.m. to 5.00 p.m.

Wednesday — 9.00 a.m. to 12.00 noon

Regents Park Baby Health Centre is used each Thursday between the hours of 9.00 a.m. and 4.00 p.m. for the treatment of pre-school children suffering with cerebral palsy.

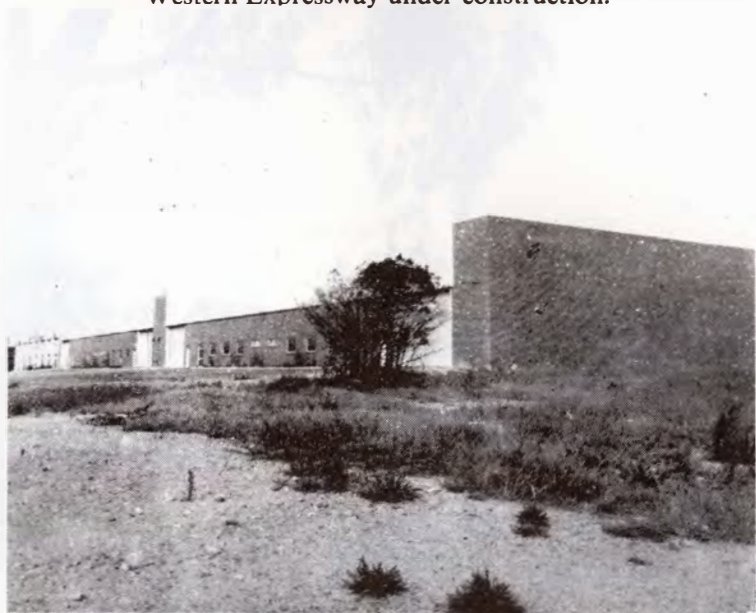
LEGAL PROCEEDINGS

During the triennial period, it was considered necessary to institute legal proceedings on fourteen (14) occasions:

- * Unauthorised use and/or occupation5
- * Breaches of Pure Food Act, 1908, as amended and Regulations1



Western Expressway under construction.



Recent warehouse development.



The popular Wyatt Park sporting area.

* Unauthorised building work.....	3
* Obstruction of footway.....	2
* Litter	1
* Removal of rubbish and waste matter	1
* Poultry nuisance.....	1
Total Fines Amounted to.....	\$2,938.00

DOG REGISTRATIONS

The following table details the activities of the Council in accordance with the provisions of the Dog Act, 1966 for the current triennial period:

	Registered	Impounded	Fees
1977-78	2924	239	\$6,455.40
1978-79	2658	260	\$5,144.80
1979-80 (to 15/4/80)	2548	219	\$4,151.10

LICENSES

	1978	1979	1980 (up to 15/4/80)
Smallgoods	72	65	59
Barbers	34	32	28
Refreshment Rooms	70	62	42
Fruit Shops	39	30	27
Butcher Shops	34	33	29
Fish Shops	6	3	3
Unilluminated signs	225	99	227
Illuminated signs	473	101	178

AIR POLLUTION — WATER POLLUTION — NOISE POLLUTION

During the past three (3) years, air and water pollution complaints have declined due to a number of influences.

These are the continuing change in the land use of the area in so far as manufacturing uses have given way to storage and warehousing, the introduction of legislation in the form of the Clean Air Act and the Clean Waters Act and the greater public awareness of the need to inhibit air and water pollution.

Council officers are continuing to work in liaison with officers of the State Pollution Control Commission and comparative

figures kept for local government bodies indicates that Council has a high degree of success in resolving problems of this nature. It may be of note that fishing activities are now being conducted in the Parramatta River as far west as the Silverwater Bridge.

In contrast to Water and Air Pollution complaints it would appear that the incidence of complaints of noise pollution is increasing. The majority of those received concern domestic type noises and Council officers are empowered to issue noise abatement orders where it is considered that a nuisance exists.

It may also be said that the public's threshold of tolerance of unwanted noise has lowered in the past and residents today are increasingly aware of noise levels in the domestic environment and are seeking Council advice in inhibiting noise. Recurrent problems in this field is the domestic air conditioner, domestic animals and appliances such as stereo and hi-fi equipment.

Complaints relating to the emission of noise should be discussed with members of Council's Health and Building Department between the hours of 9.00 a.m. and 4.00 p.m. Monday to Friday.

However, Noise Abatement Orders are most effective in controlling recurring noises such as amplified music, animal noises, and other domestic problems.

The occupier of any premises may take a complaint to a Chamber Magistrate alleging that this occupation of those premises is affected by offensive noise and the court (Petty Sessions) may summon the person alleged to be making or contributing to the making of the noise or the occupier of the premises from which the noise is alleged to be emitted to appear before it.

The Court may order the defendant to abate the nuisance and to prevent its recurrence. Contravention of an order carries a penalty of \$500.00.

Orders may not be issued against the Crown, public authorities, or so to affect activities carried on by or for the Crown or a public authority, lawful sporting activities and prescribed classes of bodies and activities.

The sworn testimony of witnesses is the main means of establishing whether or not a noise offence has been committed. Such testimony usually relies on a subjective reaction to the noise, and the circumstances of the noise annoyance, rather than a measurement of noise levels.

BUILDING APPLICATIONS

During the immediate past triennial period, Council's Building Department received a total of 1536 (Jan. Feb. March, of 1980) building applications.

The total estimated value of the new work involved with these applications was \$39,054,457 and the amount of fees paid to Council was \$60,645.70.

Generally, the building work associated with these applications was associated with alterations and additions to existing dwellings, factories and shops and the construction of carports, garages and similar small additions.

Amendments to the Builders Licensing Act, 1971, which became effective on 1st March, 1977, place new statutory obligations on all builders in New South Wales.

Certain building work which was not previously eligible for insurance under the Act, will now be eligible and new procedures need to be adopted for the submission of insurance notices to the Board.

The Act, defines building work as work involved in the construction of a dwelling or the making of alterations or additions to a dwelling and includes any lift, stairway, vestibule, corridor, garage, outbuilding, inground swimming pool or other structure where the value of the work exceeds \$1,000 and approval under the Local Government Act, 1919, as amended, is required.

Persons contemplating building work of the type mentioned above are required to submit a building application and the necessary plans and specifications to the Council and they are required to indicate on that building application that:—

1. Such building operations will be carried out by a licensed builder and the necessary insurance fee has been paid to the Builders Licensing Board.
2. The presentation of an owner-builder's permit from the Builder's Licensing Board.

From 1st March, 1977, a Council is not authorised to release approved plans and specifications where the work approved is building work as defined in the Builders Licensing Act, 1971, unless Council is satisfied that the required insurance premium has been paid to the Board or is not payable. No payment is required where an applicant can produce an owner-builder's

permit issued by the Board in respect of the approved work, or where council is satisfied that the work is of a commercial or industrial nature. An owner-builder's permit does not allow the holder to carry out electrical, plumbing, draining or gasfitting work. These trades must be done by contractors licensed by other Authorities.

Officers of Council's Health and Building Department are available Monday to Friday, 9.00 a.m. to 4.00 p.m. to discuss proposals prior to submitting a building application and any other building matters.

VACATION PLAY CENTRES

During the school summer vacation period, Council co-operates with the New South Wales Department of Sport and Recreation and conducts vacation play centres for school children at the Lidcombe Public School, Berala Public School and Auburn West Public School. These centres have capable supervisors responsible for initiating and conducting the programme of activities. Adequate equipment for both indoor and outdoor games is available as well as handicraft material for the children's entertainment.

These centres are usually organised for January each year, the precise dates are advertised in the local newspaper.

PATROL OFFICERS

Council's patrol officers maintain regular surveillance over all sections of the Municipality to detect breaches of the Act in relation to littering and parking infringements. Very heavy penalties are now in force for littering offences and residents are urged to co-operate in detecting offenders by reporting any observations made when persons responsible may be traced by use of car registration plates.

Detailed hereunder are statistical details arising out of activities of Council's patrol officers:

Abandoned Vehicles

Number of vehicles removed for the triennial period:

1978	1979	1980
90	33	6 (Up to March)

Parking Infringements

1978	1979	1980
92	141	75 (Up to March)

Dumping of Rubbish

1978	1979	1980
16	10	3 (Up to March)

CONCLUSION

During my various terms of office as an Alderman, it has become increasingly apparent that for an effective administration, the spirit of community co-operation is most important and in this connection, I acknowledge with appreciation the continued high degree of assistance received from the various community groups, clubs and similar organisations which in no small manner, displayed a keen interest in the development of the Municipality and its amenities.

Like acknowledgement is extended towards our local parliamentarians, Messrs. Tom Uren M.H.R. and Peter Cox M.P. who, as usual can be relied upon for ready assistance when an appropriate occasion arises; also I express appreciation of the efficiency and co-operation of all staff members.

With elections to be held in September next, I again remind electors of the importance of casting a vote, particularly in view of the fact that voting is now compulsory and similarly, suggest that when coming out to vote, do so by mid-afternoon to avoid the usual rush and consequent delays which occur between 5.00 p.m. and 6.00 p.m., the closing hours of voting.

Ald. T. H. Keegan, J.P.
MAYOR.

FACTS FOR GENERAL INFORMATION

Council Telephones

Office 649-6011, 649-6012, 649-6013, 649-6014, 649-6015, 646-4578.

Swimming Centre 649-9125

Public Golf Course 649-9972

Municipal Libraries — Auburn 649-6014, Lidcombe 649-9387,
Regents Park 644-7558

Baby Health Centres — Auburn 649-8621, Lidcombe 649-7941,
Regents Park 644-7540.

Postal Address

All correspondence should be addressed to the Town Clerk,
Municipality of Auburn, Box 118, P.O., Auburn, 2144 or Council
Chambes, Auburn.

Office hours: 9.00 a.m. to 4.00 p.m. Mondays to Fridays.

Electors enrolled: 31,000

Area of Parks and Reserves: 152 hectares.

Local Mobile Nursing Service

This service is located in the Council's Administrative Building,
Susan Street, Auburn, and can be contacted by ringing 649-6011,
Health Department, during ordinary office hours.

Municipal Libraries

Auburn: Mondays to Fridays 10.00 a.m. to 8.00 p.m.,
Saturdays 9.30 p.m. to 12 noon.

Lidcombe &

Regents Park: Mondays, Wednesday and Fridays 10.00 a.m. to
8.00 p.m., Tuesdays and Thursdays 10.00 a.m. to 6.00 p.m.,
Saturdays 9.30 a.m. to 12.00 noon.

Swimming Centre, Wyatt Park, Lidcombe

Summer Swimming Season: October 1 to March 31 (tentative).

Hours open to public:

Mondays to Saturdays 6.00 a.m. to 6.00 p.m.

Sundays 9.00 a.m. to 5.00 p.m. — Mondays to Fridays
6.00 a.m. to 7.00 p.m. during the months of December,
January and February.

Winter Swimming Season: April 1 to September 30 (tentative).

Hours open to public:

7.00 a.m. to 6.00 p.m. Monday to Friday, 7.00 a.m. to 5.00 p.m.
Saturday. Closed Sunday.

Municipal Golf Course

Open every day except Christmas Day.

Parking Facilities for Shoppers

All main shopping centres are subject to half-hour parking restrictions.

Adequate care parking facilities are available in Auburn, Lidcombe, Berala and Regents Park.

Accommodation for approximately 1050 vehicles is available at the undermentioned sites at all hours:—

Susan Street adjoining the public school and at the corner of Queen Street.

Kerr Parade — railway overbridge to Marion Street — angle parking.

North Parade — railway overbridge to St. Hilliers Road — angle parking.

South Parade — between Auburn Road and Harrow Road adjacent to the Royal Hotel.

Church Street Lidcombe — between Olympic Drive and railway station — angle parking.

Bridge Street, Lidcombe — at rear of hotel.

Off New Street adjacent to Bridge Street.

Berala Shopping Centre.

Mary and John Street, Lidcombe — at rear of Court House.

Amy Street, Regents Park — at rear of shops, entrance from Regent Street.

Hours open to public
7:30 a.m. to 6:00 p.m. Monday to Friday, 7:00 a.m. to 5:00 p.m.
Saturday, Closed Sunday

Municipal Golf Course

(Open every day except Christmas Day)

Parking facilities for shoppers

All main shopping centres are subject to half-hour parking
restrictions

Adequate car parking facilities are available in Auburn,
Litchfield, Berala and Regents Park.

Accommodation for approximately 1050 vehicles is available
at the unattended sites at all hours:—

— Susan Street adjoining the public school and at the corner
of Queen Street.

— Kerr Parade — railway overbridge to Marion Street — angle
parking.

— North Parade — railway overbridge to St Hilliers Road — angle
parking.

— South Parade — between Auburn Road and Harrow Road
adjacent to the Royal Hotel.

— Church Street Litchfield — between Olympic Drive and railway
station — angle parking.

— Bridge Street Litchfield — at rear of hotel.
— Old New Street adjacent to Bridge Street.

— Berala Shopping Centre.

— Mary and John Street Litchfield — at rear of Court House.
— Amy Street, Regents Park — at rear of shops entrance from
Regents Street.

Setting, Printing and Binding by
BUSHELL PRESS PTY. LTD.
79 Silverwater Road, Auburn, N.S.W.. 2144
Telephone: 648-2531 (3 lines)