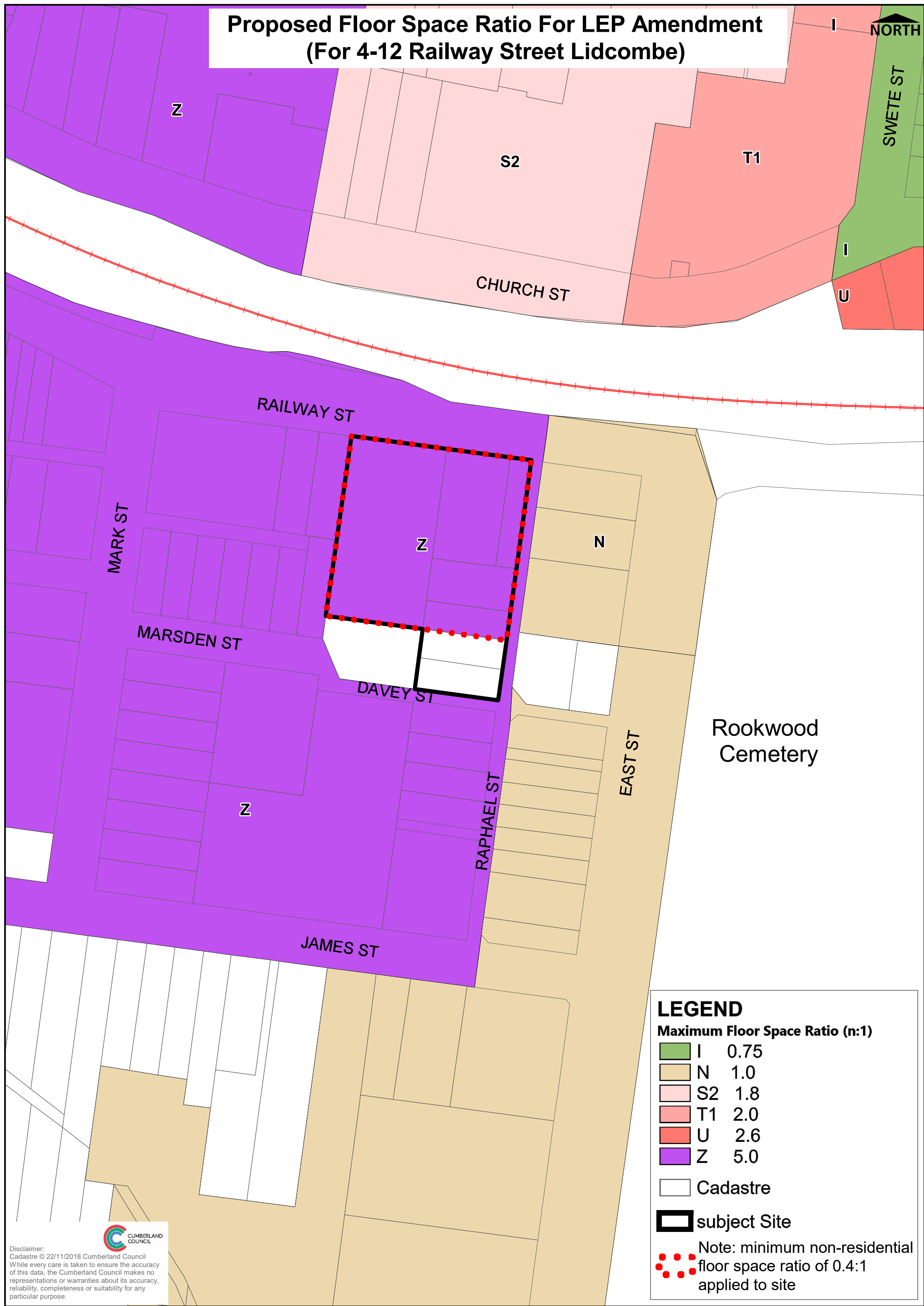


Proposed Floor Space Ratio For LEP Amendment (For 4-12 Railway Street Lidcombe)



LEGEND

Maximum Floor Space Ratio (n:1)

I	0.75
N	1.0
S2	1.8
T1	2.0
U	2.6
Z	5.0

Cadastre
 subject Site
 Note: minimum non-residential floor space ratio of 0.4:1 applied to site

Disclaimer:
 Cadastre © 22/11/2018 Cumberland Council
 While every care is taken to ensure the accuracy of this data, the Cumberland Council makes no representations or warranties about its accuracy, reliability, completeness or suitability for any particular purpose.