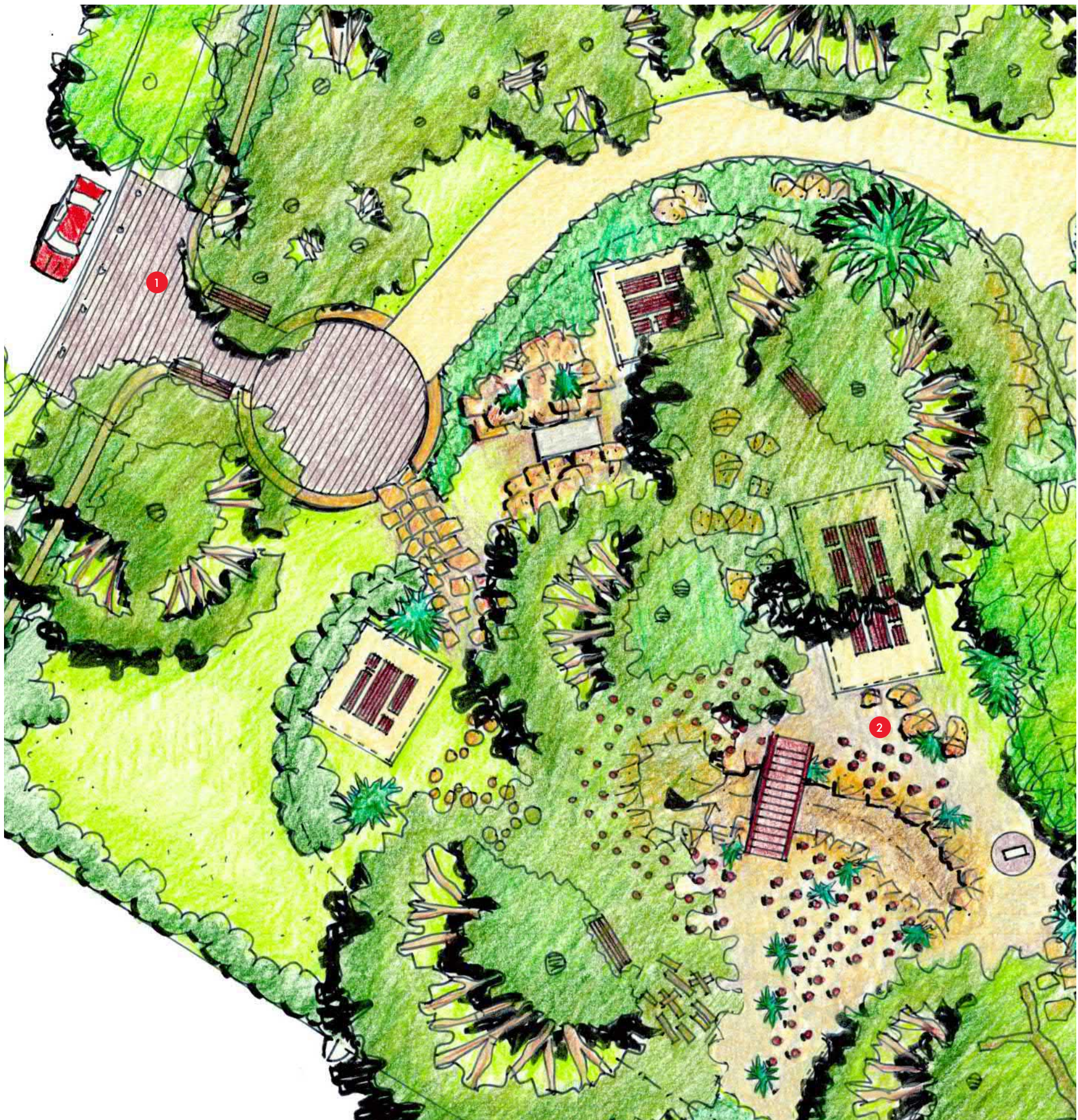




LEGEND

- 1 TARGO ROAD FRONTAGE.**
- 2 NATURE PLAY AREA**
- 3 PERIMETER BOUNDARY**
All existing gate access points to park retained. Planting of shrubs and groundcovers in front of existing fences.
- 4 TABLE TENNIS**
- 5 PLAY SPACE**
- 6 SWING ZONE**
- 7 FITNESS ZONE**
- 8 PICNIC ZONE**
- Shaded picnic zone with covered picnic table settings large enough for small group gatherings.
- Dual (2no) accessible BBQs with sink
- 9 PENDLE CREEK WETLAND**
- 10 CIVIC PARK PLAZA**
- 11 COMMUTER CARPARK**
- Pedestrian connection between Civic Park and town centre prioritised with new parking layout.
- New connection from carpark to second bridge. - Total parking numbers retained.
- Parking space to service creek maintenance and gross pollutant trap.
- 12 TENNIS COURT AND PARKING**
- Carpark extended to accommodate sixteen (16) spaces including one (1) accessible space adjoining relocated gate entrance to court.
- Southern boundary fence adjusted to suit new car park alignment.
- Picnic furniture relocated closer to court
- Footpath connection to Village Green
- 13 HALF BASKETBALL COURT**
Partially fenced half court surface with seat walls and two access points.
- 14 LEONARD MOORE TREE**
Tree and plaque to be within new garden area and village green with seat walls adjoining
- 15 AMENITIES BUILDING**
Two (2) new accessible toilets
- 16 VILLAGE GREEN**
Village green with perimeter path, deciduous trees and space suitable for event overlays.

Drawing Title Project Name Drawing No. Revision Date Drawn/Checked Project Principal Scale



LEGEND

1 TARGO ROAD FRONTAGE.

- Central entry at Targo Road with arrival precinct to retain Cumberland forest trees
- Plaza with bench seating and seating walls.
- New street fence setback , screened with planting on road side and parking replaced with street trees and vehicle drop off zone.



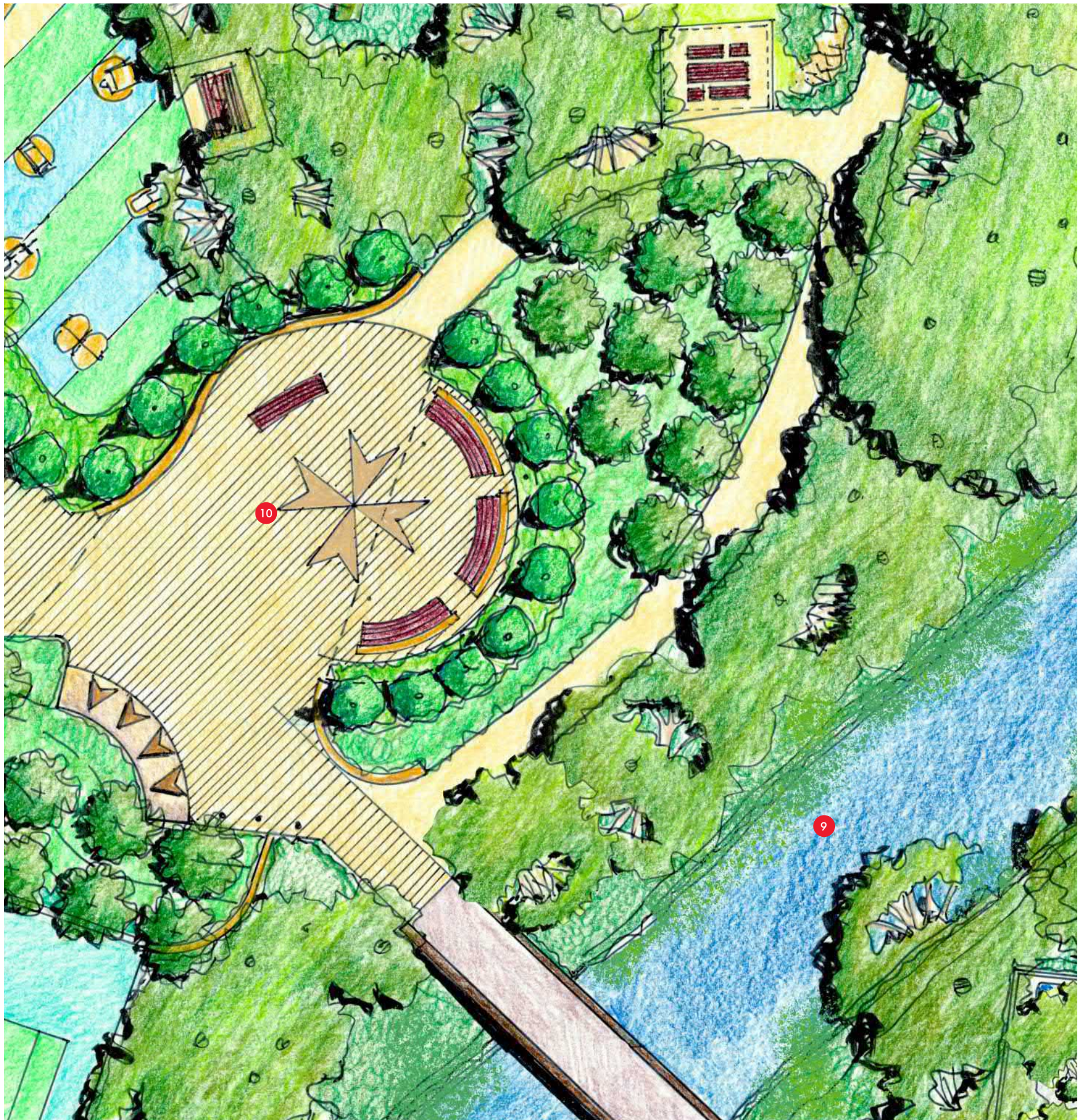
2 NATURE PLAY AREA

- Existing large trees retained to provide shade and all elements will be sited to avoid tree roots. Supplementary tree planting to enhance naturalist feel of play area. Playground to be fenced with two entry points and planting installed to conceal fence.

Elements include:

- Dry creek and bridge with pebbles and rock boulder edges within a forest of pine logs
- Tunnel and rock mound
- Large tree trunks laid horizontally, tree trunk segments and rock stepping stones
- Sandstone logs for climbing and stepping
- Sensory planting throughout
- Cement stabilised decomposed granite paving inter planted at base of existing trees
- Large picnic tables and shelters (for birthday parties and large groups)
- Bench seats and drinking fountain





LEGEND

9 PENDLE CREEK WETLAND

- Two (2) new bridges that integrate with proposed masterplan design .
- Replace existing weir, outlet structures, trash boom and improve access to dewatering and sedimentation zone.
- Remove weeds, regrade embankments, install separation between macrophytes and upper embankment planting where possible and replant.
- Rock weirs to lower velocities and provide access for maintenance.
- Solar powered mechanical aerators.



10 CIVIC PARK PLAZA

- Upgraded Plaza area incorporating the following:
- Creation of space suitable for event overlay
 - Retention of existing canopy and removal of brick walls that impede views
 - Reinforcement of link to town centre and proposed bridge location
 - Highlight Maltese memorial zone, relocation of flag poles (3no.) along ceremonial path and installation of larger Maltese star in paving area.
 - Stone terrace walls and tree planting to enhance space
 - Tree species selection to be considered to reflect tall vertical "pencil pine" type tree and give a representation of "orchard groves".





LEGEND

- 4 TABLE TENNIS**
Two (2) table tennis tables set within village green with seat walls
- 5 PLAY SPACE**
- Play area with climbing structures, lookout, slides for different age groups, rope scramble net, accessible carousel, bridges and climbing structures.
- Shade structure over equipment.
- 6 SWING ZONE**
Swings (2) and birds nest swing and location for drinking fountain.
- 7 FITNESS ZONE**
Dynamic and static equipment with bench seat/table.

