

## Heritage Inventory Sheet

Item Name	Headstone and Memorials		
Site Image			
Address	Factory Street, western side, near Clyde Railway Station, Granville NSW 2142		
Lot/Section/DP	Part of Lot 11	-	814794
Current LEP ID	I319 (Cumberland LEP)		
Heritage Conservation Area	Not included		
Date Updated	August 2024		
Significance Level	LOCAL		
Site Type	Level 1	Built	
	Level 2	Cemeteries and Burial Sites	

## Curtilage Map



## Statement of Significance

The headstone and two memorials (a fountain and a plaque) at the northern end of Factory Street, Clyde are significant at the local level for their historic, associative, social and rarity values. The memorials are dedicated to the owners of the former Brunton and Co Flour Mills, and the headstone to one of the owner's pet dog.

Historically, the site was occupied by Brunton and Co. Limited a branch of the Australian Flour Mills between 1868 and 1982. The headstone was set up by John Spencer Brunton to his dog, a Gordon Setter named Royal who was born in 1923 and died in 1933. The memorial fountain is dedicated to John Spencer Brunton who funded the construction of this memorial at his factory. Another small plaque commemorates Thomas Brunton, founder of the Australian Flour Mills which was in operation from 1868-1982. The memorials have a strong association with the Brunton family, specifically Thomas Brunton, founder of the Australian Flour Mills, and his grandson John Spencer Brunton, also a prominent miller.

The headstone has social significance to the local community who have documented and recognised the significance of this headstone as a unique and unusually extensive tribute of a man to his dog. This item is rare within the Cumberland LGA. There are no other known examples in the local area of headstones for pets that are as well maintained and that are so extensively detailed.

## Criteria Assessment

### a) Historic

Historically, the site was occupied by Brunton and Co. Limited a branch of the Australian Flour Mills between 1868 and 1982. The headstone is a memorial set up by John Spencer Brunton to his dog,

	a Gordon Setter named Royal who was born in 1923 and died in 1933. The memorial fountain is dedicated to John Spencer Brunton who funded the construction of this memorial at his factory. Another small plaque commemorates Thomas Brunton, founder of the Australian Flour Mills which was in operation from 1868-1982.
b) Associative	The memorials are associated with the Brunton family, specifically Thomas Brunton, founder of the Australian Flour Mills, and his grandson John Spencer Brunton, also a prominent miller.
c) Aesthetic/Technical	The item does not meet this criterion.
d) Social	The headstone has social significance to the local community who have documented and recognised the significance of this headstone as a unique and unusually extensive tribute of a man to his dog. The memorials likely have social significance to the former workers and families of Brunton and Co. Limited.
e) Scientific	The item does not meet this criterion.
f) Rarity	This headstone is considered rare within the Cumberland LGA. There are no other known examples in the local area of headstones for pets that are as well maintained and that are so extensively detailed.
g) Representativeness	The item does not meet this criterion.

### Physical Description

The item consists of two memorials and a headstone. The two memorials are dedicated to the owners of the former Brunton and Co Flour Mills that were located at this location along Factory Street between 1881 and c.1980s. The memorials are located within the boundary of the current NSW Lotteries Corporation offices. They are located on the Factory Street Entrance to the building and are set back behind a tall metal palisade fence that has been painted white.

The item consists of stone headstone, and two memorials which include a marble fountain, and a small memorial plaque. The stone headstone is approximately 1.5m tall and is inscribed and painted with a detailed inscription, the first line which reads:

‘IN MEMORY OF  
ROYAL:  
BORN 1923 DIED 1933’

A marble fountain is located behind the headstone which was erected in memory of John Spencer Brunton. A small plaque is located in the garden bed nearby the headstone. The plaque commemorates Thomas Brunton, founder of the Australian Flour Mills which was in operation from 1868-1982. This plaque was dedicated by courtesy of Toish Construction Pty Ltd in association with the Granville Historical Society and the TAB of NSW.

The headstone and two memorials are situated beside a garden bed which features a mature Port Jackson Fig Tree. This tree is visible in aerial imagery dating back to 1943.

The item is well-maintained and is in a good condition.

<b>Condition</b>	<b>Good</b>	Fair	Poor
------------------	-------------	------	------

### Alterations and Additions

- None

The item is considered to be of high integrity.

<b>Integrity</b>	<b>High</b>	Moderate	Low
------------------	-------------	----------	-----

*\* element detracts from the overall cultural significance of the place*



## Historical Notes

Construction years	1933
--------------------	------

### Clyde

Clyde is small industrial suburb to the south-east of Parramatta CBD and adjacent to Granville, Clyde is bounded by Duck Creek to the north and west and the Duck River to the southeast. The history of Clyde is closely linked to the expansion of railway infrastructure along the western line and the associated development of manufacturing in the area. In mid-nineteenth century, the potential of the lands south of the Parramatta River in the vicinity of the Duck River were recognised by the firm of Hudson Bros. who had established a timber and joinery works in Redfern in the 1850s. By the late 1870s, the business had outgrown its Redfern site and a new location of about 7 acres (2.8 ha.) was chosen at what is now known as Clyde. In 1884 Hudson & Sons amalgamated with Robert Ritchie agricultural machinery including ploughs and chaff cutters. The company became very diversified, manufacturing trams as well as railway carriages and wagons, and 'Clyde' brand windmills.

Adjacent to the new works, a township had begun to grow with several subdivisions of residential land being offered for sale. The grand opening of the Hudson plant took place in July. The industrial township was initially known as 'Hudson' or 'New Glasgow' because of the Scottish origin of the majority of the workers. The adjacent railway platform also officially opened in 1883 was named Clyde Junction.

Over the course of the twentieth century the character of the suburb changed from mixed residential and industrial to almost wholly industrial. In 1897 the established firm of Hudson Bros. went into voluntary liquidation and in October 1898 the former Hudson works became the property of the newly formed Clyde Engineering Co. Ltd. In 1925 a crude oil refinery on the southern bank of the Parramatta River near the junction with the Duck River. Known as Clyde Refinery the plant was built by John Fell and Co. Pty. Ltd. In 1925. From 1928 until its closure in 2013 it was operated by Shell Refining (Australia) Pty. Ltd.

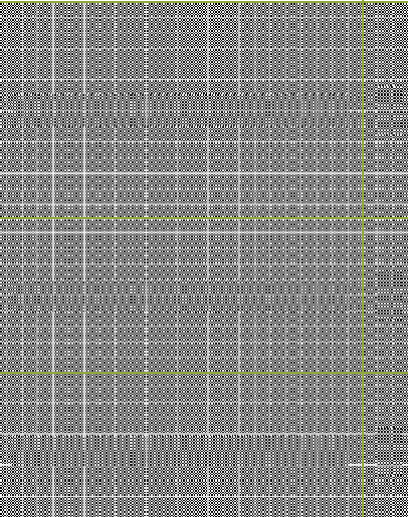
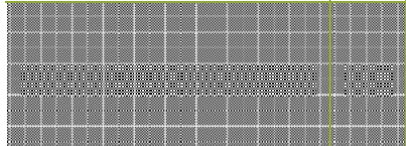
### Headstone and Memorials

The item is located on a portion of 250 acres of land granted to Darcy Wentworth that would later be occupied by the Brunton and Co. Pty Ltd Flour Mills. The headstone was set up by John Spencer Brunton to his dog, a Gordon Setter named Royal who was born in 1923 and died in 1933.

John Spencer Brunton was the owner of the Flour Mill, Brunton and Co Proprietary Limited, and the grandson of Thomas Brunton, founder of the Australian Flour Mills in Victoria. Brunton was also a soldier and known sportsman and joined the flour milling firm on his return from serving in France as a soldier during WWI.

Brunton and Co. had begun operating at the subject site along Factory Street, Clyde in 1868. John Spencer Brunton's died in 1948. He left an estate valued for £56,715 and directed that his executors should erect a fountain at the mill of Brunton and Company Ltd. and place on it an urn containing his ashes with the inscription that reads "The mill will never grind, with water that has passed." On inspection, there was no evidence as to whether Brunton's ashes were placed on site, however, the Memorial fountain, headstone for Brunton's dog named Royal, and a memorial plaque for Brunton's grandfather, Thomas Brunton remains on site.

Aerial imagery indicates that the former Flour Mills at the subject site were demolished in the 1980s. Presently, the site is occupied by the NSW Lotteries Corporation with no other known evidence of the former mill.

Recommendations					
Heritage Management		Existing Built and Landscape Elements		Future Development and Planning	
1. Include this item as a new heritage listing on the LEP.	X	6. Original fabric is highly significant and should be maintained.	X	12. Alterations and additions should respond to the existing pattern of development, with careful consideration of the setting (form, scale, bulk, setback and height).	
2. Include this item's listing as part of or as a Heritage Conservation Area.		7. Unsympathetic alterations that detract from the cultural significance of the item should be removed.		13. New alterations and additions should respect the historic aesthetic/character of the item and area (e.g. paint scheme, materiality, style, landscape elements).	X
3. Consider additional research to nominate this item for the State Heritage Register.		8. Maintain heritage landscape elements and schemes.	X	14. Future uses for this item should be compatible with its historical functions/ associations.	
4. The heritage curtilage for this item should be revised/reduced.		9. Maintain the existing setting of the heritage item, informed by the historic pattern of neighbouring development (form, scale, bulk, setback and height).			
5. Not recommended for inclusion on the LEP.		10. Maintain the historic aesthetic/character of the item and area (e.g. paint scheme, materiality, style, landscape elements).	X		
		11. The condition of this item is poor. Condition and maintenance should be monitored.			

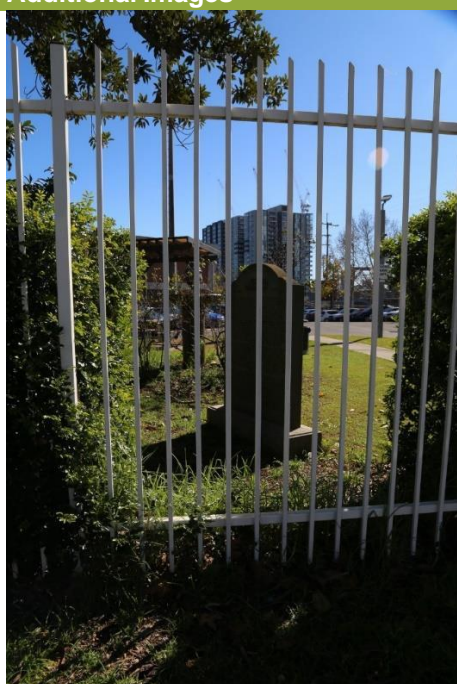
## Other References

- *The Cumberland Argus*, 1951, 'Roundabout by Brock' Wed 28 March.
- <https://trove.nla.gov.au/newspaper/article/106923822?searchTerm=headstone%20royal%20granville%201933>
- *The Cumberland Argus and Fruitgrowers Advocate*, 1945, 'Sportsman Tribute to his Dog', Wedy 10 January.
- Jones C. 2010. *John Spencer Brunton*, accessed August 2020, <https://strathfieldheritage.org/people/biographies/john-spencer-brunton/>
- McHardy, C. 2019, *Clyde – A Brief History*, accessed August 2020, <https://historyandheritage.cityofparramatta.nsw.gov.au/blog/2019/12/04/clyde-a-brief-history>

### Limitations

1. Access to all heritage items was limited to a visual inspection from the public domain. The interiors of buildings and inaccessible areas such as rear gardens were not assessed as part of this heritage study.
2. Condition and site modification assessment was limited to a visual inspection undertaken from the public domain.
3. Unless additional research was required, historical research for all heritage items was based on existing information in the Cumberland Heritage Study Stage 1 2019 prepared by Extent Heritage.

### Additional Images



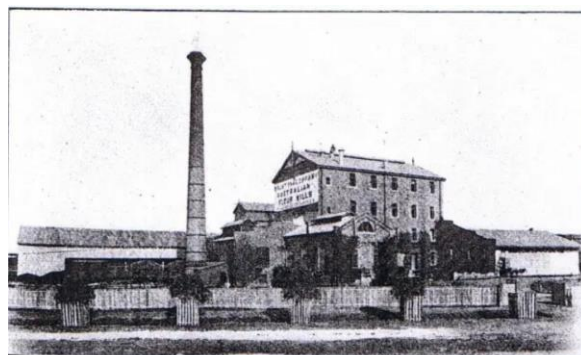
View to headstone from Factory Street. Note the memorial fountain located behind the headstone.



View to mature Port Jackson Fig Tree located next to Memorials.



Memorial Plaque for Thomas Brunton, founder of the Australian Flour Mills.



Bruntons at Granville (Source: Strathfield Heritage)