

A photograph of a park area. In the foreground, there is a concrete drainage ditch with a metal fence on the left side. The fence has some graffiti on it. To the left of the ditch is a grassy field. In the background, there are several large trees and a multi-story building. The sky is overcast.

## 4.O LANDSCAPE MASTERPLAN



# PARK PRINCIPLES

4 key guiding principles were developed for the project.



## TELLING THE STORY OF COUNTRY

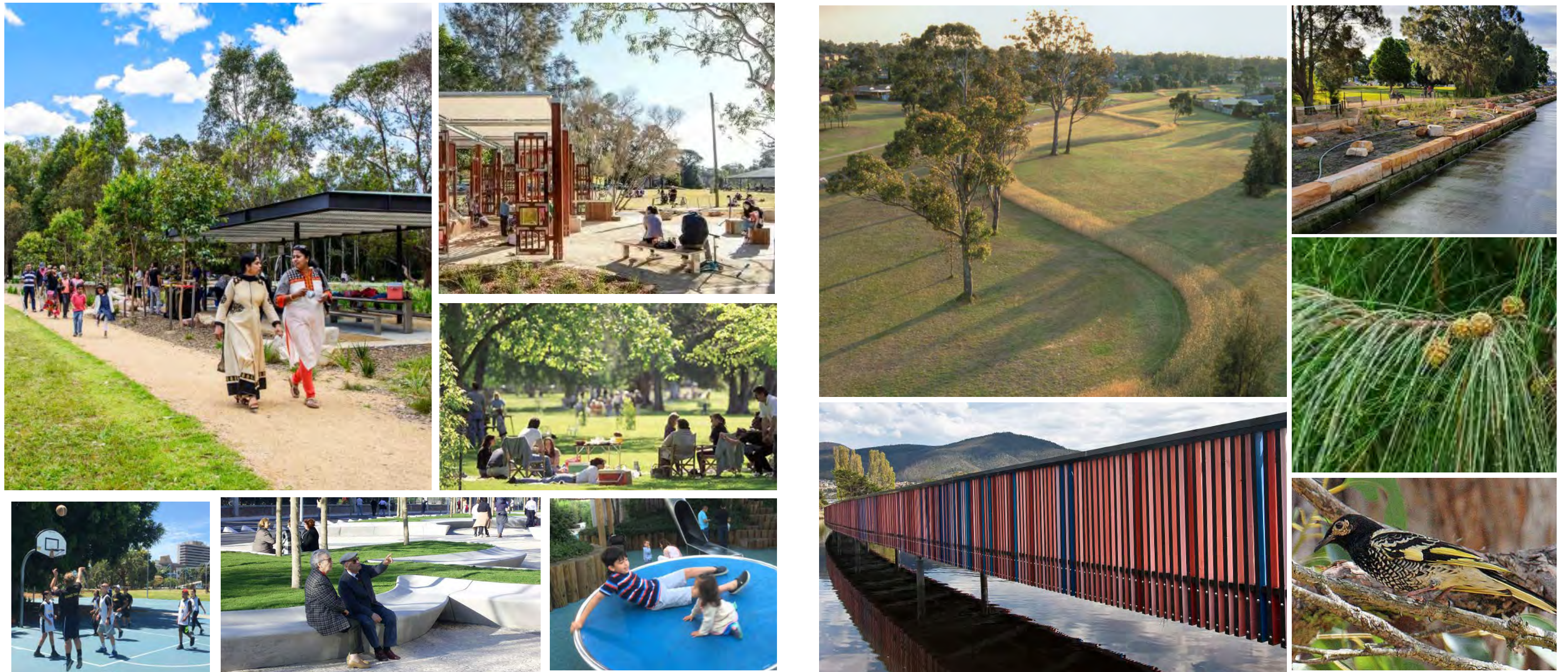
- Consider how the park design can restore country, as well as speak to Darug peoples' social, cultural and spiritual understanding of this creek corridor.
- Consider how the design can be shaped by this deeper understanding of place.
- Consider opportunities to foster meaningful first nations engagement through programs, events or employment opportunities – e.g artist in residence programs.
- The design could explore opportunities to tell the story of country and explore methods to integrate ways to understand country and awareness of Aboriginal and Torres Strait Islander culture.

## CREATE CONNECTIONS.

- Create places for this highly diverse community to connect. Provide places for people of all ages to enjoy the park.
- Create new paths and bridges through the park.
- Explore how the civic hub/ library and existing community building can facilitate new opportunities to enjoy the park. e.g outdoor classes, outdoor library
- Provide capacity for more low scale neighbourhood cultural events and ensure this is managed to maintain amenity for neighbouring residents.
- Explore ways to link park users with existing facilities such as the Community Gardens e.g Food trails.



# PARK PRINCIPLES



## CREATE PARK 'LIVING ROOMS'

- Provide more park rooms where larger groups can gather for picnicking and celebrations.
- Provide a diverse range of seating, tables and shade structures to allow for a range of possible ways to gather.
- Provide more paths and bridges to provide places to meander and wander through the park.
- More lighting to allow for better nighttime use.
- Maximise shading and cooling through new shade trees.

## RENEW THE CREEK

- Explore opportunities to improve water quality and creek health.
- Continue to enhance ecological patches of EEC communities and provide ways for park users to understand these remnants.
- Explore ways to improve habitat in the park. eg plantings for native birds.



# PARK DESIGN THEMES

The landscape masterplan was developed to respond to the site analysis and consultation feedback. Underpinning this masterplan are two design themes. Theme one is the idea of paths of discovery. This recognises that the long, narrow park structure can provide opportunities for a variety of paths that can capture diverse sights and experiences. Theme 2 is the idea of park living rooms, a series of smaller park spaces that provide space for rest, respite, and play. These concepts are further described below.



- The design creates multiple new paths that are designed as paths of discovery.
- The paths move through varying textures and conditions, under jacarandas, over gardens and wetlands, through she oak groves and nature play areas, and across the creek.
- The paths vary in width and amplify changes in conditions. Raised walkways denote water underneath. Stepping stones create informal paths and nature trails through gardens.
- The paths incorporate space for comfortable seating and places for people to stop and rest.

- Positioned throughout the park the living rooms create smaller destinations. These complement the larger park destinations; the Village Green, Casuarina Play and Flow Playground.
- These park rooms are positioned to create different views and windows to nature.
- These park rooms act as gathering places providing comfortable seating, tables and shade structures.
- These include playful elements such as interactive artworks, logs and natural elements that illuminate themes of place, ecology and country.



# PARK DESIGN THEMES

## CONNECTING TO COUNTRY

### TREES OF SIGNIFICANCE

Connecting with Country consultant, Bangawarra have identified that a number of Eucalyptus and Corymbia species that are culturally important for local peoples through symbolism and stories. These layers of ancestral stories and associated cultural practices will be revealed at later stages of the project through consultation with local indigenous groups and leaders.

These significant species have been embedded within the proposed planting palette where possible. These include Yellow Box, Stringy Bark, Iron Bark and Spotted Gum species. Other non endemic species that do not naturally occur within the Cooks River/ Castlereagh Ironbark Forest, and Cumberland Swamp Oak Floodplain Forest communities may be interpreted through colour or texture within park materials and furniture, or through public art.

An interpretation strategy developed in future stages of the project could include interpretive signage to explain stories related to these species.



*E. Melliodora* - Yellow Box



*E. obliqua* - Stringy Bark



*E. crebra* - Iron bark



*Corymbia maculata* - Spotted Gum int



*E. piperita* - Sydney Peppermint



*E. saligna* - Blue Gum



Winged Harvest - Fiona Foley



*E. haemastoma* - Scribbly Gum



Interpretive pavement treatment



# PRINCIPLES

## CONNECTING TO COUNTRY

### BABYSITTER TREE

Bangawarra have also identified the importance of the she oaks (*Casuarina Glauca*) within indigenous culture.

The *Casuarina* is known as the babysitter tree across many of the Sydney Nations. She is known as *dahlwah* to local Dharawal Peoples. The unique environment she creates forms an important ecological and cultural space for Local Aboriginal Peoples of Sydney. Culturally, she holds so many rich layers of story.

The casuarina grows in clusters, tall and straight with distinct needle-like leaves that fall to form a soft allelopathic carpet around the trees. Snakes and other reptiles find this surface inhospitable and the lack of undergrowth too exposed, so it is a safe place of comfort and refuge. Children of the Sydney Basin are taught that if they get lost in the bush they should go to *Dahlwah*, because they are safe there, and the lack of understorey means they will be easily spotted by their family when they are searching. While the children wait they are comfortable on the soft leaves and safe from reptiles.

The casuarina grove also creates a shared cultural space - a place to make string together and share stories - hence the term 'yarning'. This is important layer for cross cultural exchange and all coming together on Country.

Casuarina trees are prevalent within Lytton Street and Irwin Place Parks, particularly along the creek corridor edges and around the existing play space. This species will be further supplemented with new plantings located around gathering places and places for children such as the Flow Playground and Casuarina Playground in response to their importance and symbolism.



*Casuarina glauca* - Swamp Sheoak, Dahl'wah



Existing *Casuarina* grove at Lytton Street Park



Illustration of babysitter tree story



# PARK STRUCTURE

## CIRCULATION AND PATHS



Over 1000 linear metres of new paths are proposed for walking, jogging and cycling throughout the park. These paths unlock previously inactive areas of the park and provide opportunities for discovery and exercise. This path network increases activity, improving neighbourhood access and safety.

A shared path is located through the park, providing a slow speed cycle connection through the site. This is located on the eastern side of Lytton Street Park then shifts to the western side of Irwin Place Park at Fullagar Road. Signage and line marking will be used to identify the shared path. All paths will allow compliant access for all abilities use.



# PARK STRUCTURE

## VEHICULAR ACCESS



Vehicular access is provided at park entries via gates and removable bollards. This allows managed access into the site for emergency vehicles, maintenance vehicles and loading vehicles. Vehicular access to the Wentworthville Community Garden is maintained via a path on the western side of the canal with open grass area for turning around. Small trucks and vans can access the park via a gate on Lytton Street for events within the Village Green.



# PARK STRUCTURE

## SPACES



A series of new and expanded destinations are proposed throughout the park. These include places to exercise, play, picnic and gather. These are located adjacent to the expanded path network, and are located along the entire length of the park.

A key feature of the master plan is the addition of two centrally located play spaces with their own distinct identity. Active play is provided to the west of the canal catering for older children and teens. A more intimate nature play space on the eastern side of the canal provides exploratory play opportunities for younger children. Other areas include informal park areas with bbqs and picnic shelters water treatment gardens, and woodland regeneration gardens.



# PARK STRUCTURE

## FURNITURE + FIXTURES



A suite of new amenities will ensure the park is safe, comfortable and welcoming for the community. These include new benches, picnic tables, and shade structures for families and smaller groups to enjoy. BBQs are located close to picnic shelters. A new toilet facility with 2 cubicles and a outdoor communal sink is located near the Killeen Street entry and close to the new Casuarina playground.

Lookouts with seating for views of wetlands and raingardens provide quiet spaces for rest. There is an opportunity for integration of smart infrastructure to increase sustainability and efficiency of the park.



# PARK STRUCTURE

## BRIDGES



Three new bridge crossings are proposed. These bridges offer direct connections across the canal to key destinations. The existing bridge will also be ungraded. The design of each bridge will be unique, responding to its position within the park.

The Wetland Bridge offers the opportunity for to interpret the adjacent wetlands, through colour and signage. The Village Bridge will echo the character of the adjacent flow playground through use of playful colours and finish. The upgraded Forest Bridge will use materials and colours that reflect it's close proximity to the woodland habitat gardens.



# PARK STRUCTURE

## LIGHTING



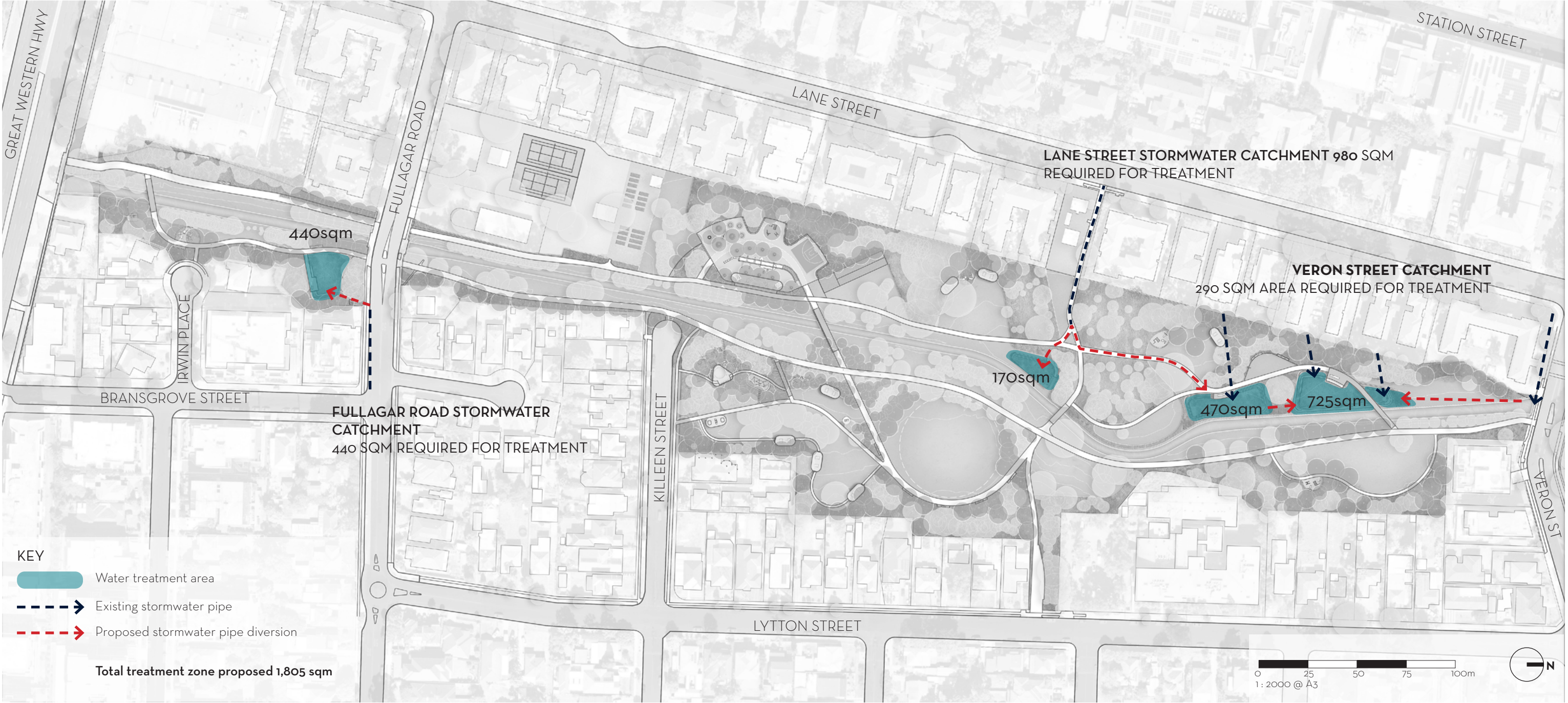
New park lighting will be provided on primary and secondary paths to improve safety. Pole top fittings will be positioned to minimise light spill to **neighbouring properties**. Feature underlighting lighting is proposed for each of the park bridges highlighting crossing points. These will create a unique night time effect.

Lighting is not included within play spaces and active use areas such as the basketball court and cricket net to discourage night time use. Smart lighting including sensor lighting and energy efficient lighting fixtures will be explored in detailed design of the project.



# PARK STRUCTURE

## STORM WATER TREATMENT



A series of wetlands and raingardens are positioned within low points of the site. These water treatment zones collect stormwater via diverted incoming stormwater pipes from surrounding streets. Pollutants are filtered through wetland planting areas before being released back into Finlayson Creek.

The wetlands provide environmental benefit for the broader Finlayson Creek catchment and offer opportunities for community education. They also provide habitat for birds and wildlife. A lookout with seating is positioned adjacent to each of the water treatment zones for the enjoyment of park users.



# PARK STRUCTURE

## KEY SPACES



0 25 50 75 100m  
1:2000 @ A3





# PARK SPACES

## THE NORTHERN FIELD & WETLAND



KEY

- 1. Existing path connection from Veron Street widened to 3m to accommodate shared path. Signage and line marking to be included.
- 2. New wetland bridge providing access accross canal, with integrated wetland lookout on western side of the canal.
- 3. Wetlands providing treatment of stormwater flows from adjacent catchments prior to release into Finlayson Creek.
- 4. New wetland walk path with seating opportunities
- 5. Decomposed granite path with shaded seating areas facing open informal kickabout lawn.
- 6. Proposed native trees supplementing existing trees, providing shade and screening adjacent residential building.
- 7. New native understorey planting, screening adjacent boundary fencing.
- 8. Outdoor fitness station with rubber softfall surfacing.
- 9. Picnic lawn with new picnic setting and shade canopy.
- 10. Incidental nature play elements existing trees.
- 11. Existing nature gardens expanded with additional planting and new fencing.
- 12. Finlayson Creek Canal

KEY

- Existing trees
- Proposed trees
- Rehabilitation/ restoration
- Rain garden/ Wetland
- Park Boundary

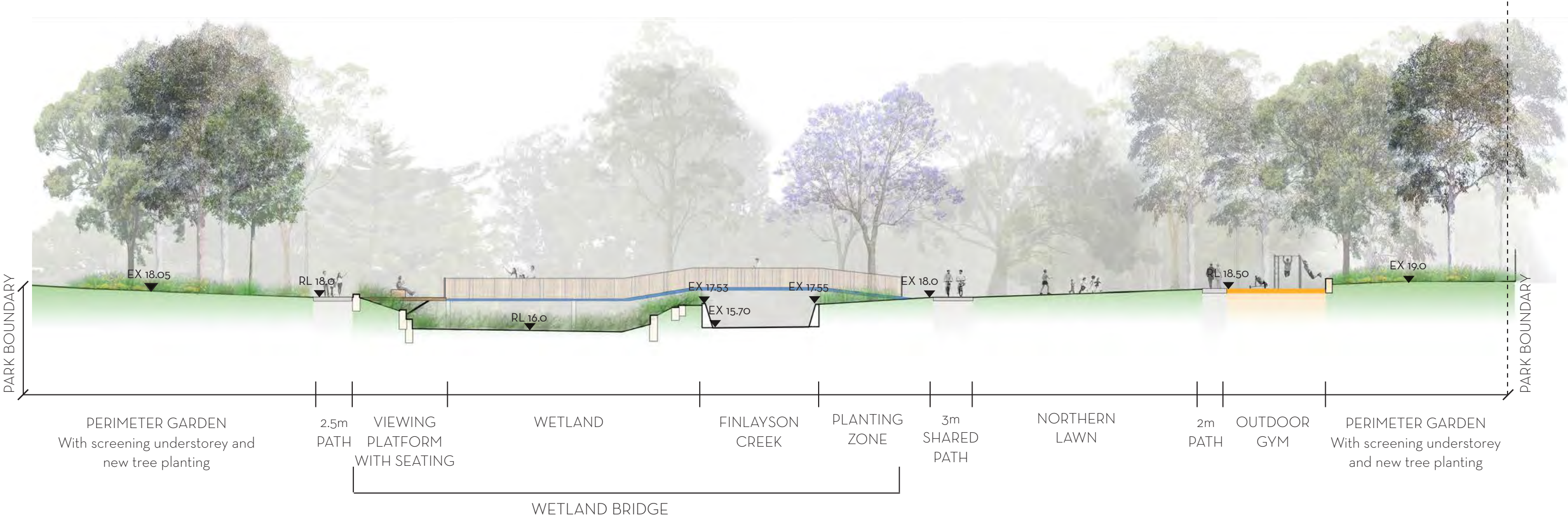


# PARK SPACES

## PARK NORTH



KEY PLAN



PARK NORTH  
SECTION A-A  
1:250 @ A3



# PARK SPACES

## THE VILLAGE GREEN & PLAYGROUNDS



**KEY**

- 1. Potential repurpose of 1900's heritage cottage to include community uses such as art gallery, indigenous learning centre, or community craft managed by council tandem with Community Centre on Veron Street.
- 2. New rain garden with adjacent viewing platform providing treatment of stormwater flows from adjacent catchments prior to release within Finlayson Creek.
- 3. Existing fenced bushcare zones expanded with additional planting. Fencing to be repaired where necessary.
- 4. Park rooms with new picnic setting and shade canopy over.
- 5. Proposed native trees supplementing existing trees, providing shade and screening adjacent residential building.
- 6. Low-key nature play elements amongst existing trees.
- 7. Active recreation element. Refer to Detail Plan.
- 8. Flow Playground. Refer to Detail Plan.
- 9. Casuarina Play. Refer to Detail Plan.
- 10. Ernest Quinn Village Green with perimeter path, new park seats and tree planting.
- 11. Park Bridge upgrade of existing timber bridge
- 12. Play Bridge providing direct connection between the east and west playgrounds.
- 13. New native understorey and tree planting.
- 14. New park paths.
- 15. New footpath to Killeen Street
- 16. Finlayson Creek channel
- 17. Vehicular entry to community garden maintained
- 18. 3m shared path through park with signage and line markings
- 19. Barbecues



# PARK SPACES

## CASUARINA PLAY + FLOW PLAYGROUND



### KEY

1. Repositioned cricket nets with expanded run up and fully fenced to eliminate conflict with balls
2. Proposed basketball halfcourt
3. Outdoor gym pods with chin up bars and sit up benches.
4. 4m high shade structure with picnic facilities located under
5. Flow Playground custom play structure with integrated swings, slides climbing nets and hammocks
6. In ground trampolines.
7. See-saw
8. Inclusive spinner.
9. Proposed native trees within planted tree pits.
10. Accessible rubber softfall surfacing with graphic pattern.
11. 450mm high concrete seating walls.
12. Existing Melaleuca grove retained.
13. Existing trees to be retained.
14. Proposed native trees supplementing existing trees, providing shade and screening adjacent residential building.
15. Village Bridge connecting to Village Green and Flow playground
16. Finlayson Creek.
17. 3m shared path through park with signage and linemaking.
18. Casuarina Play with nature play elements including balance beams, sandstone boulders, small slide and stepping stones within planting.
19. 400mm raised play deck with integrated sand pit, seating and deck bells with shade canopy over.
20. Timber post and rope playground set with organic mulch softfall with seating walls to periphery.
21. Stepping stone path through planting.
22. Discovery path shaded by trees over.
23. Public amenities with open communal sink close to park entry.
24. Park rooms with new picnic setting and shade canopy over.
25. BBQ facilities



PARK SPACES  
PARK CENTRAL



KEY PLAN



PLANTING  
ZONE

FLOW PLAYGROUND - ACTIVE PLAYSACE  
With accessible surfacing, large custom swing structure,  
inground trampolines, playdecks slides, see-saw and  
inclusive spinner.

BBQ + PICNIC  
FACILITIES

2.5m  
PATH

PLANTING  
ZONE

FINLAYSON  
CREEK

PLANTING  
ZONE

3m  
SHARED  
PATH

CASUARINA PLAY - NATURE PLAY  
With stepping stones, balance beams, boulder play, plydeck  
with sandpit, shade structure and seating.

VILLAGE BRIDGE

PARK CENTRAL SECTION  
SECTION C-C  
1:250 @ A3



# PARK SPACES

## PLAYGROUND ELEMENTS







KEY

1. New decorative fence to Lapidary Club/park edge.
2. New tree planting and understory planting to screen adjacent properties.
3. Existing stands of trees retained, with understory planting.
4. New rain garden treating stormwater runoff flows from adjacent catchment prior to release within Finlayson Creek.
5. Timber lookout with seating overlooking raingarden wetland.
6. New bridge connection.
7. Nature play elements under proposed trees..
8. New bench seats along path.
9. Outdoor gym pod shaded by new tree planting.
10. Finlayson Creek
11. 3.0m shared path through park with signage and linemarking.
12. 4m shared path through park with signage and linemarking.



# MASTER PLAN

## INDICATIVE PLANTING



<div></div> <b>ZONE 01 - Bush Regeneration</b> <i>Corymbia maculata</i> - Spotted Gum <i>Eucalyptus melliodora</i> - Yellow box <i>Eucalyptus obliqua</i> - Stringy bark <i>Eucalyptus teriticornis</i> - Forest Red Gum <i>Dichelachne micrantha</i> - Short hair Plume Grass <i>Dichondra repens</i> - Kidney Weed <i>Leptospermum petersonii</i> - Tea Tree <i>Microlaena stipoides</i> - Weeing Grass <i>Themeda triandra</i> - Kangaroo Grass <i>Viola hederacea</i> - Native Violet	<div></div> <b>ZONE 02 - Native Gardens for screening</b> <i>Corymbia maculata</i> - Spotted Gum <i>Eucalyptus crebra</i> - Ironbark <i>Acacia elata</i> - Cedar Wattle <i>Acacia glaucescens</i> - Coast Wattle <i>Callistemon salignus</i> - Pink-tip Bottlebrush <i>Callistemon viminalis</i> - Weeping Bottlebrush <i>Doryanthes Palmerii</i> - Giant Spear Lily <i>Melaleuca ericifolia</i> - Heath Leaved Paperbark <i>Themeda triandra</i> - Kangaroo Grass <i>Westringia fruticosa</i> - Coastal Rosemary	<div></div> <b>ZONE 02 - Canal Planting</b> <i>Casuarina glauca</i> - Swamp Oak <i>Casuarina torulosa</i> - Forest Oak <i>Hardenbergia violaceae</i> - Purple Pea <i>Jacaranda mimosifolia</i> - Jacaranda <i>Lomandra longifolia</i> 'Tanika' - Tanika <i>Lomandra confertifolia</i> 'wingara' - <i>Juncus usitatus</i> - Common Rush <i>Themeda triandra</i> - Kangaroo Grass <i>Westringia fruticosa</i> 'Mundii' - Mundii	<div></div> <b>ZONE 02 - Wetland Planting</b> <i>Ficinia nodosa</i> - Knobby club-rush <i>Imperata cylindrica</i> - Blady Grass <i>Lomandra longifolia</i> 'Tanika' - Tanika <i>Lomandra confertifolia</i> 'wingara' - <i>Juncus usitatus</i> - Common Rush	<div></div> <b>ZONE 02 - Play Garden</b> <i>Anigozanthos</i> 'Gold Velvet' <i>Casuarina glauca</i> - She Oak <i>Corymbia maculata</i> - Spotted Gum <i>Chrysocephalum apiculatum</i> - Yellow Buttons <i>Jacaranda mimosifolia</i> - Jacaranda <i>Hardenbergia violaceae</i> - Purple Pea <i>Hibbertia scandens</i> - Guinea Flower <i>Helichrysum petiolare</i> - Licorice Plant
---	---	--	--	---



# MASTER PLAN

## PERSPECTIVE VIEW - FLOW PLAYGROUND





# MASTER PLAN

## PERSPECTIVE VIEW - WETLANDS

