

VISION FOR WYATT PARK

1. Haslams Creek pedestrian/ cycle link to Olympic Park
2. Vehicular connection to Olympic Drive retained (left entry/left exit only)
3. Shared car park
4. Extended Cumberland Basketball Centre incorporating Council maintenance store
5. Auburn Athletics Centre (retained)
6. Additional perpendicular parking in Percy Street
7. Refurbished netball change rooms, kiosk, public toilets and storage facility
8. Cycle/ pedestrian link to Auburn town centre
9. Local playground and fitness station for Gelibolu precinct
10. Netball courts - lower courts to be sealed. New perimeter paths, seats and shade trees
11. Existing road to be modified to become an emergency entrance only and pedestrian path including landscape treatments
12. Outdoor passive recreation space - volleyball/badminton
13. PCYC, basketball court and parking (retained)
14. Upgrade Lidcombe Oval Grandstand and amenities
15. New purpose-built stadium/changerooms & storage facility
16. Sculptural landform/ marker
17. Picnic/ BBQ area
18. Existing dog off-leash area
19. Perimeter shared path
20. Girl Guides and Scouts Halls (retained)
21. Haslams Creek
22. Internal shared path
23. Lidcombe Oval perimeter path
24. Lidcombe Oval and Velodrome
25. Small plaza/ forecourt to Lidcombe Oval Scoreboard, retain existing drop-off bay
26. New hardstand area/ kiosk/ food truck
27. Multi-use fields and event space
28. New multi-purpose youth and community centre (1,200m²)
29. New fitness station
30. Car park (retained)
31. Auburn Ruth Everuss Aquatic Centre
32. Church Street: retain existing parking and provide additional street trees
33. Destinalional all abilities playground and learn to ride facility with safety fence along Olympic Drive
34. Potential future pedestrian/ cycle overbridge to Chadwick Reserve (subject to RMS approval)
35. Indoor/outdoor Skate/scoot park
36. Existing car park (retained)
37. Cycle/ pedestrian link to Lidcombe town centre

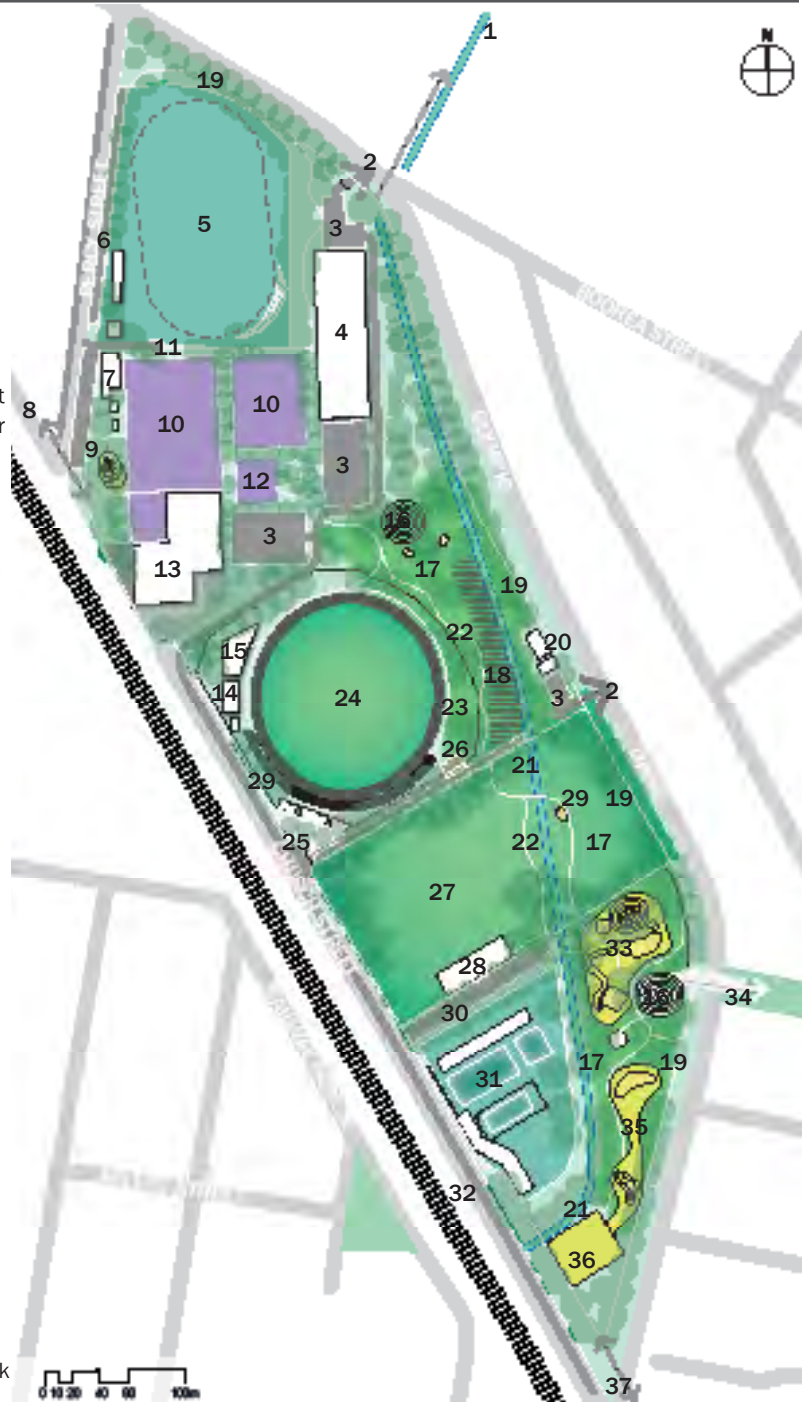


Figure 9: Wyatt Park Landscape Masterplan